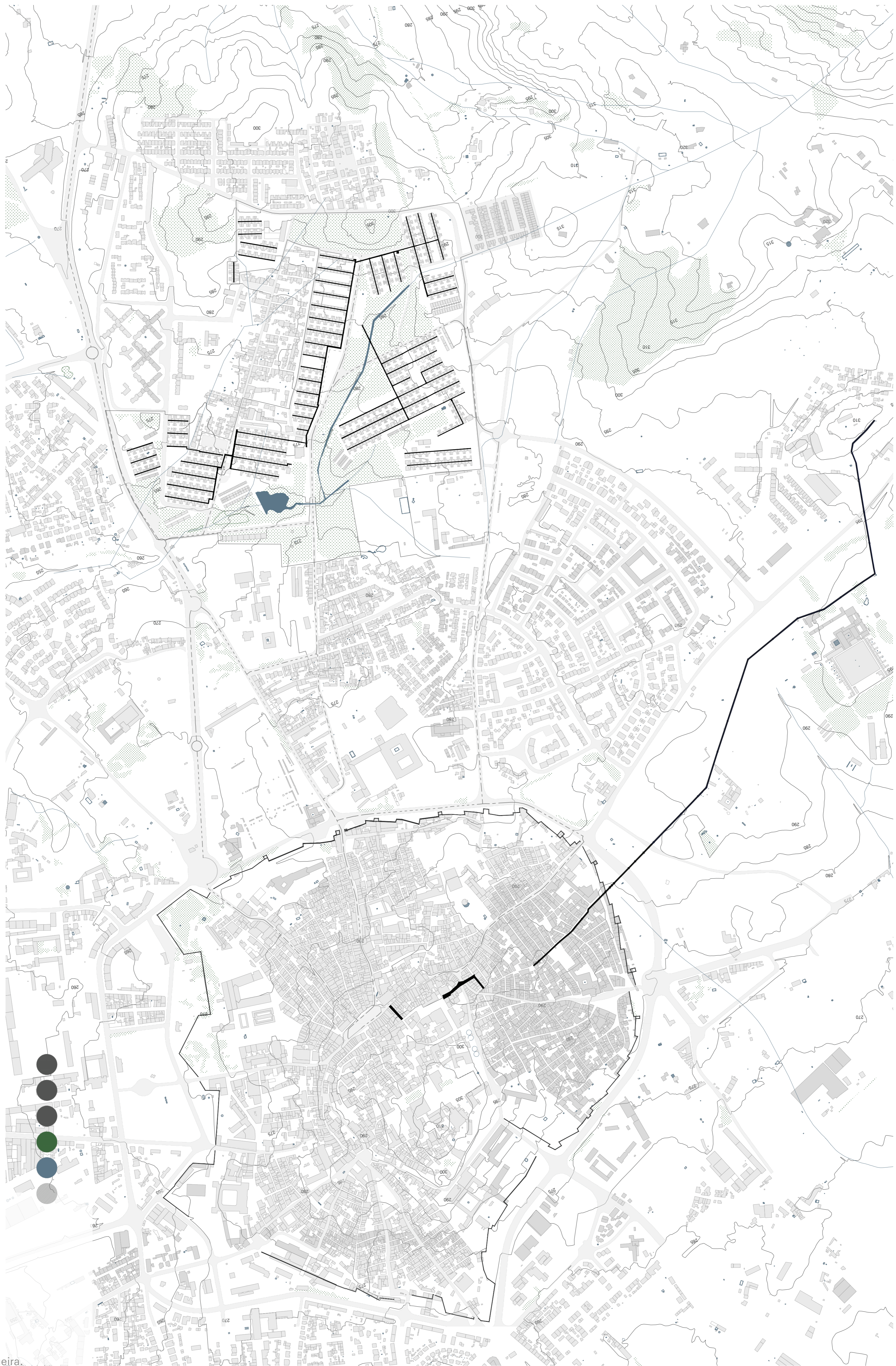


# Rehabilitation of the Malagueira neighbourhood

The duct, the public space and the water

1 2 3 4 5 6

scale 1:1500



Malagueira Neighborhood.

Historic Évora Center.

Agua de Prata Aqueduct.

Malagueira Aqueduct.

Green spaces.

Watercourses.

Axis From Center to Malagueira.

# Rehabilitation of the Malagueira neighbourhood

The duct, the public space and the water

1 2 3 4 5 6

scale 1:1500



- Conduc Oppenings ●
- Green Public Space ●
- Duct Materiality:
  - a. White Plaster. ●
  - b. Concrete Block. ●
- Intervention ●
- Duct Mark points: ●
- Elements Never Built: ●

1. Broadway 2- 1983.
2. Restaurante Casa de Chá. 1986.
3. Associação Orquetra de Acordeoes de Évora. 1988
4. Complexo Paroquial. 1989.
5. Aparthotel 1992.
6. Escola de Linguas. 1992 - Clínica Médica. 1997
7. Semicúpula. 1999.
8. Junta de Freguesia. 2001.
9. Sede da Cooperativa de Boa Vontade. 2005.

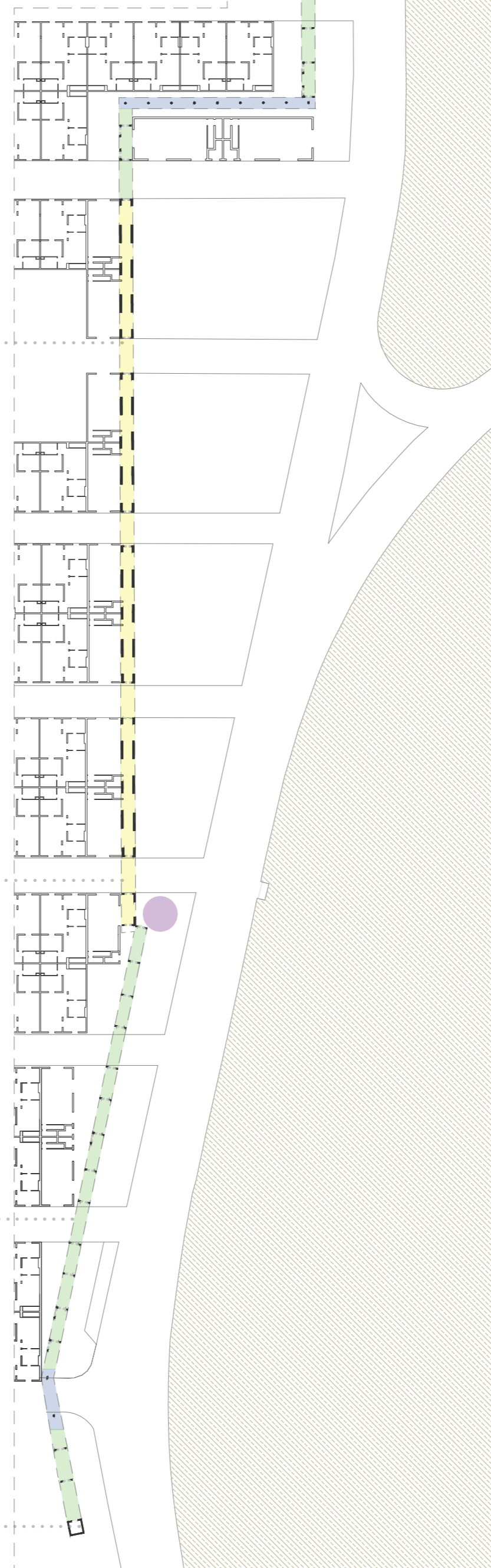
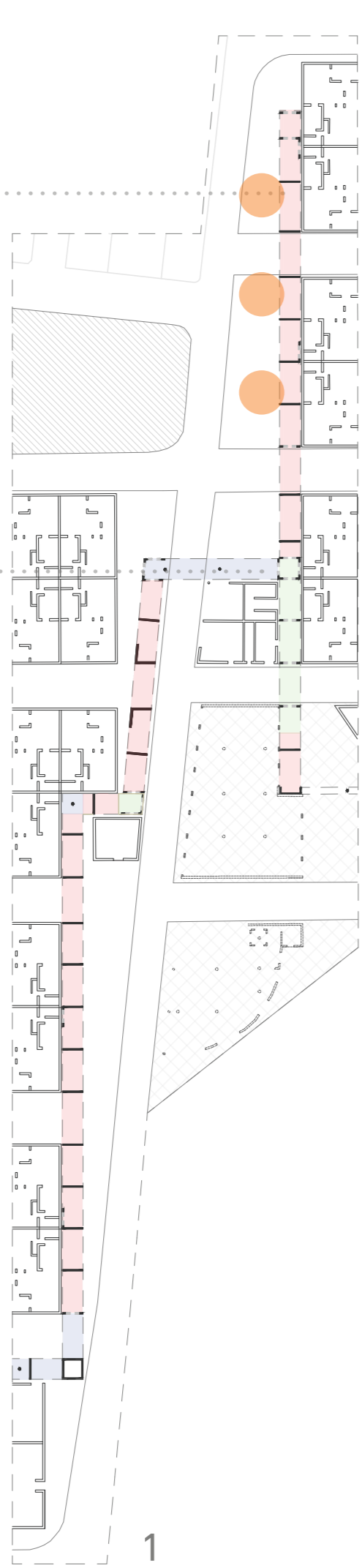


# Rehabilitation of the Malagueira neighbourhood

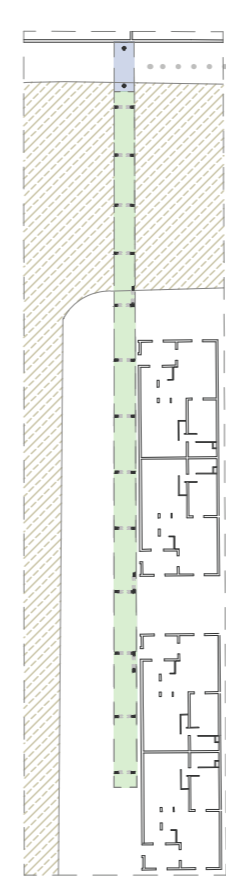
The duct, the public space and the water

1 2 3 4 5 6

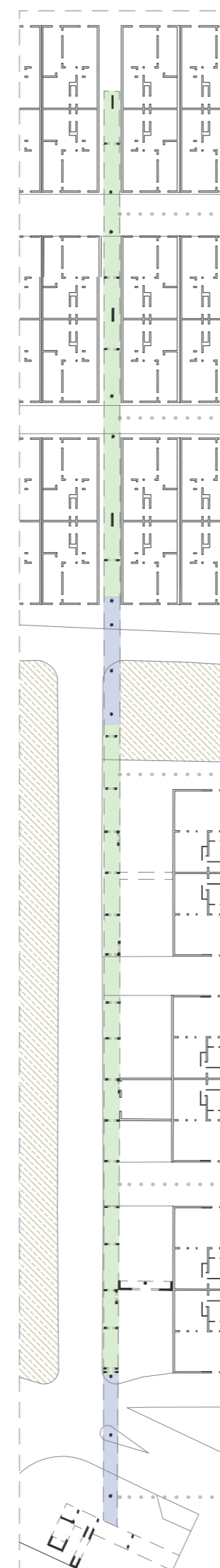
scale 1:600



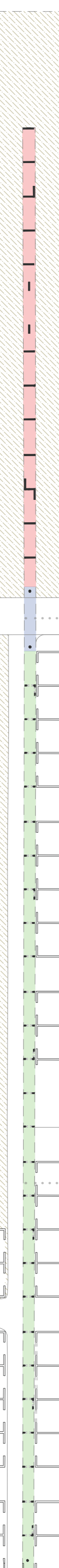
2



3.1



3



4



## Duct routes.

The Duct creates a gallery with a variation of columns typologies depending on its function.

The variation is separated with different colors and all the route are analyzed as it is directly related with others constructions, from commercial to residential ones.

This relation comes from the pillars form.

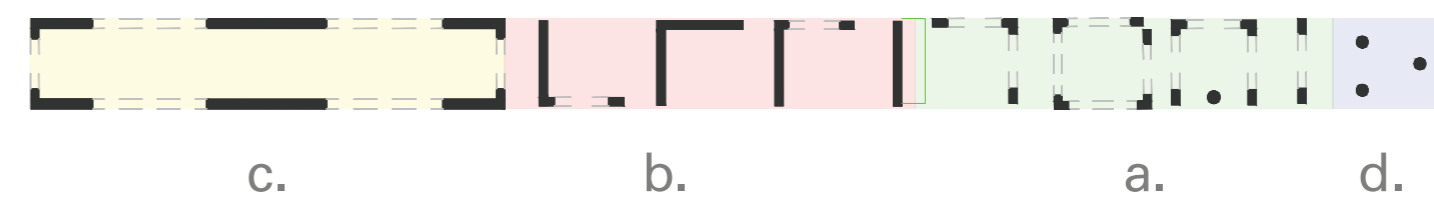
The typologies are divided into a, b, c, d.

Besides the pillars the structure also complements the public space with urban furniture.



This furniture can be made:

- brick
- white stone



a. Portic with a passage.

b. Perpendicular Pillar without passage. They creates spot zones.

c. Paralel Pillar. Seen only in Praça Zeca Afonso. Creates stop moments with the possibility of passage.

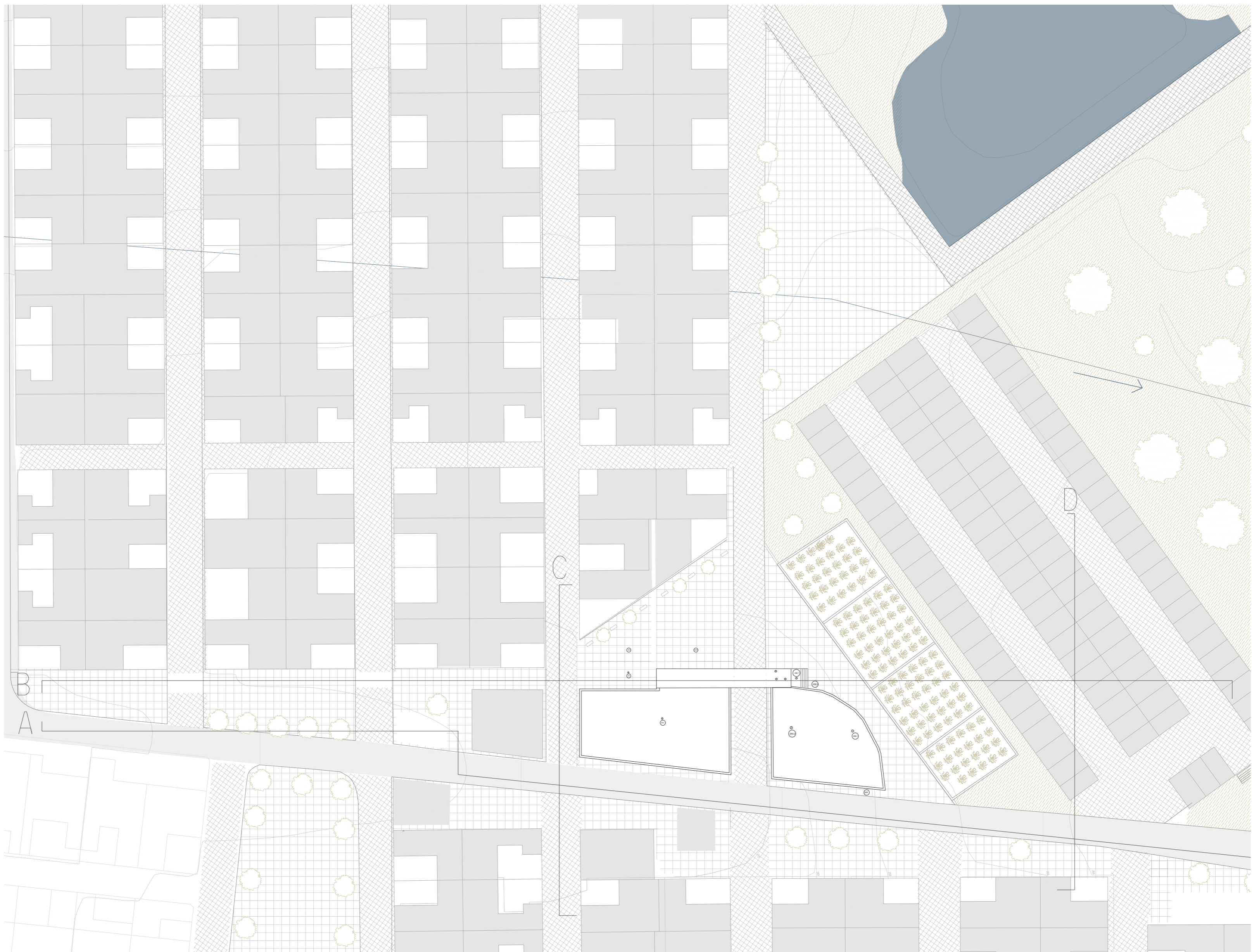
d. Columns: to mark street crosses.

# Rehabilitation of the Malagueira neighbourhood

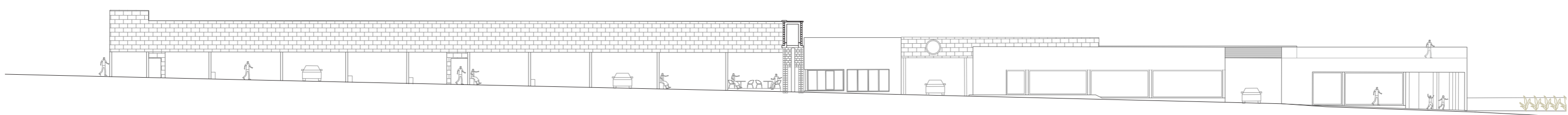
The duct, the public space and the water

1 2 3 4 5 6

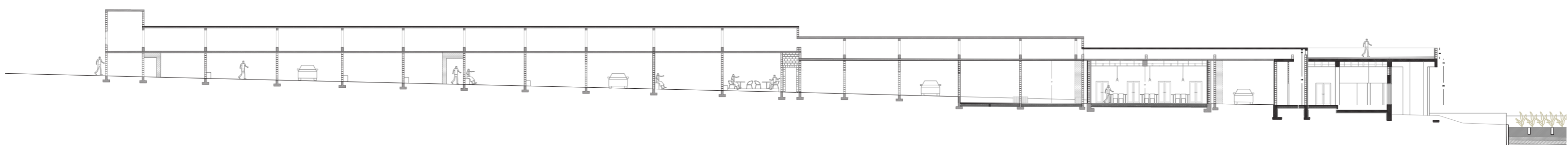
scale 1:200



Area de intervenção



South view section A.



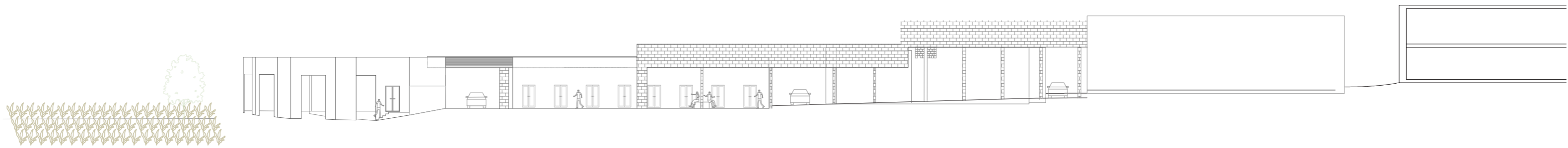
Duct and project section.

The intervention area is located in the Duct Route #1.

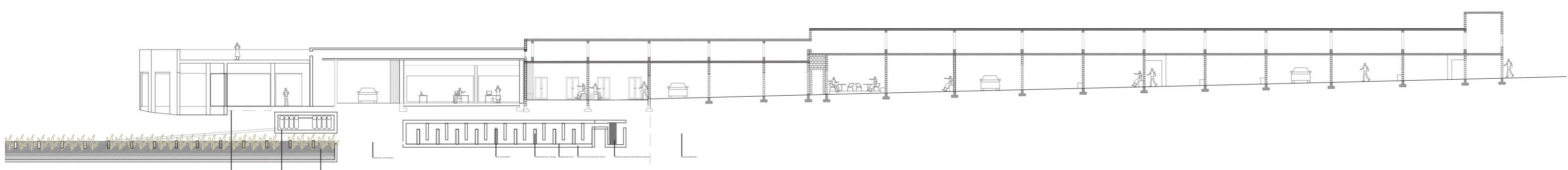
This urban Void was planned as a commercial spaces for the neighborhood.

The Space was used with a new function as a Natural Treatment Water Plan .

1. New Intervention Buildings.



North view.



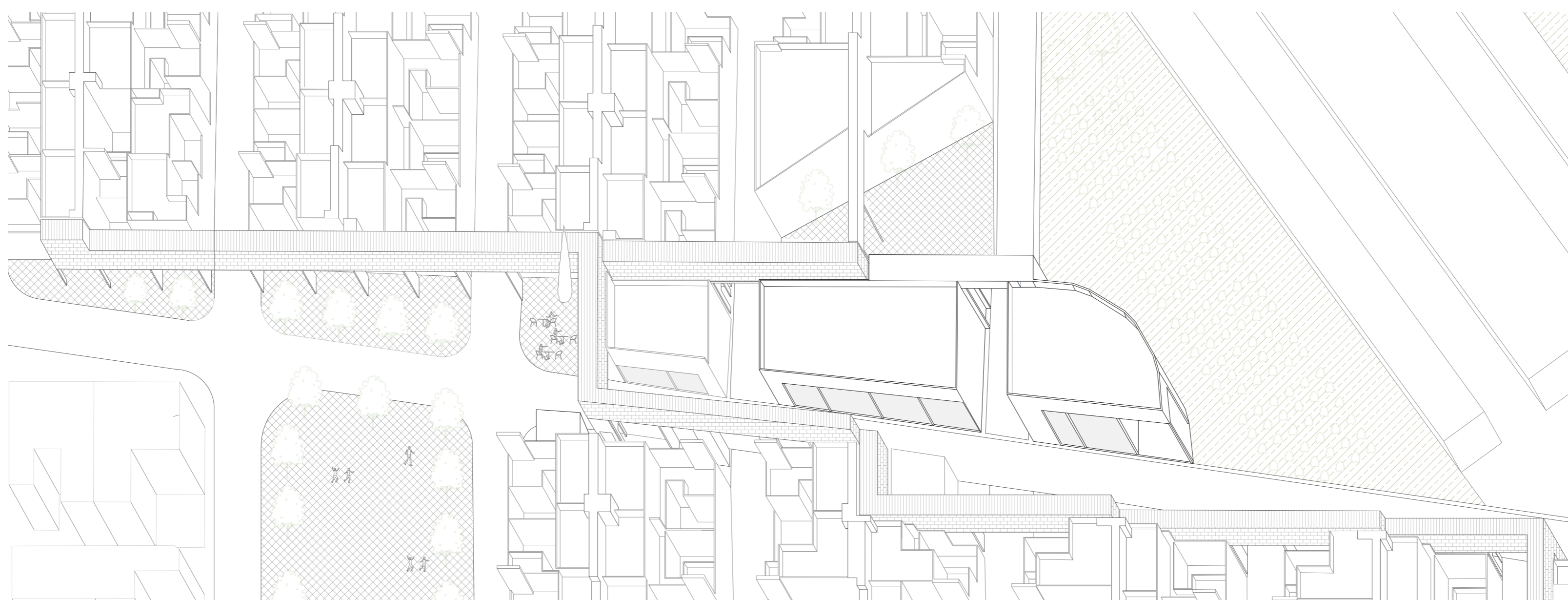
Duct and project section B.

# Rehabilitation of the Malagueira neighbourhood

The duct, the public space and the water

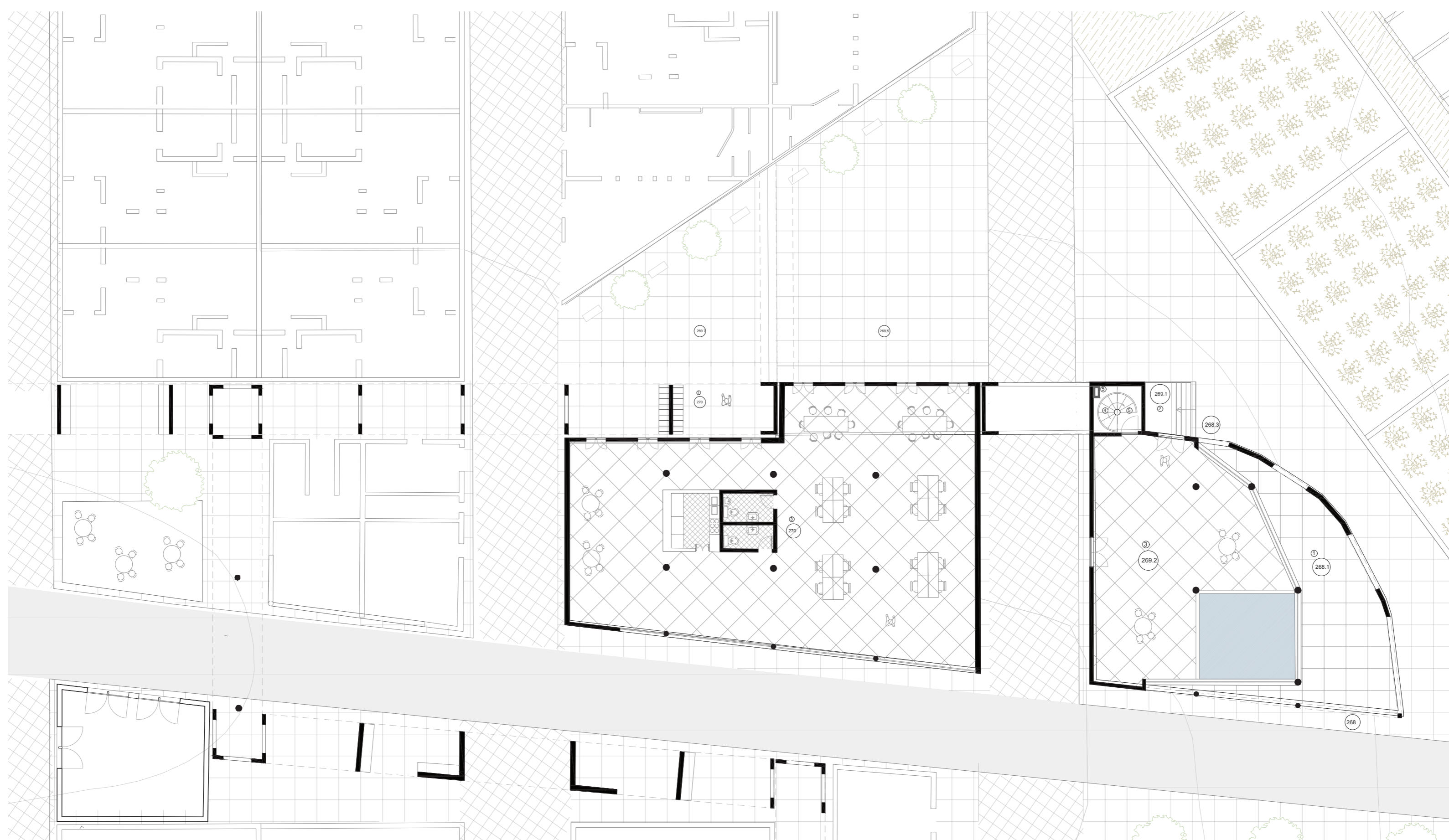
1 2 3 4 5 6

scale 1:100



Santa Maria Square.  
Duct.  
Green public spaces.

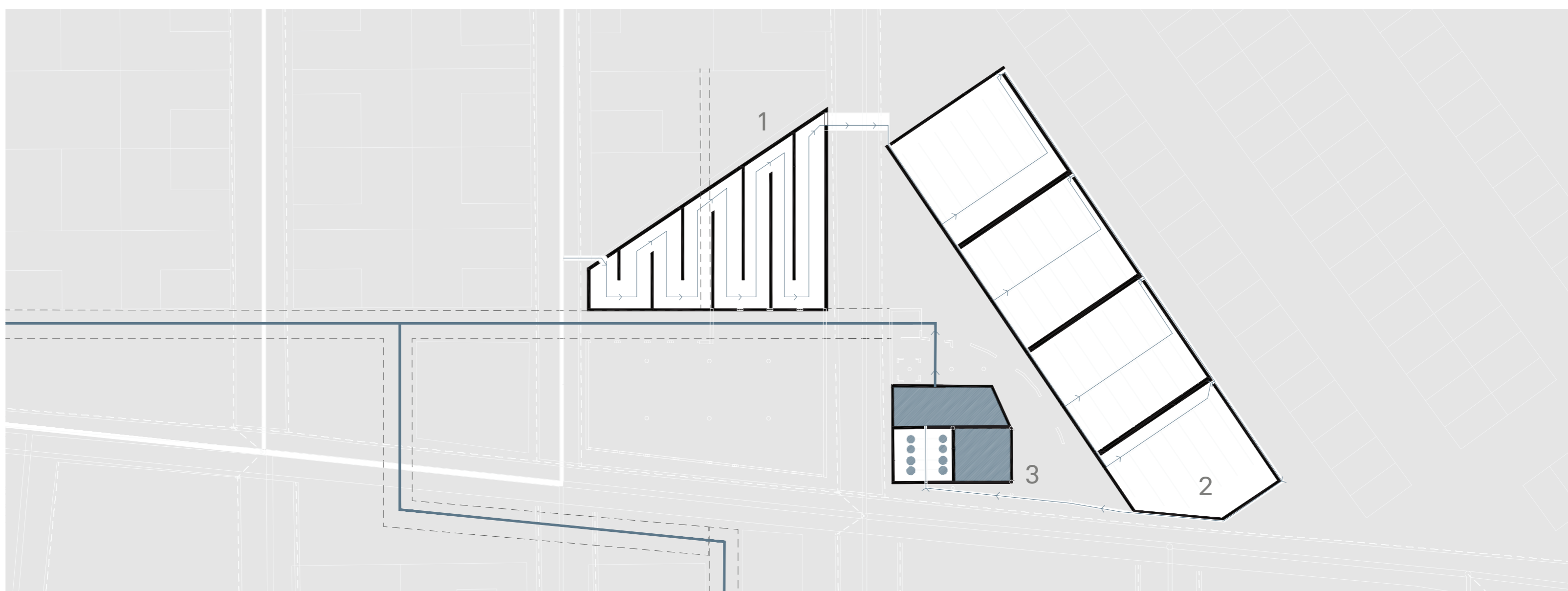
Intervention south view



Exterior pavements:

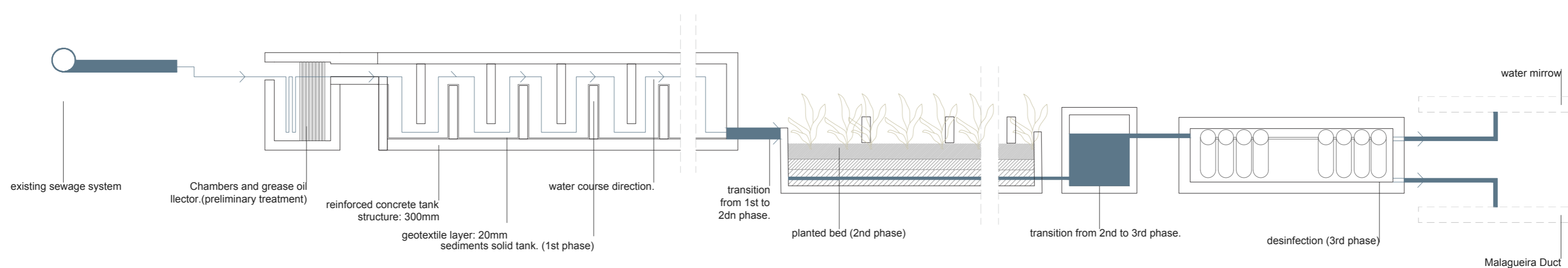
Irregular pavement.  
White Marble Stone.  
7x7 regular pavement  
Betume

Ground Floor



1. Sediments Solid Tanks.  
2. Planted Bed.  
3. Desinfection.

Treatment tanks.



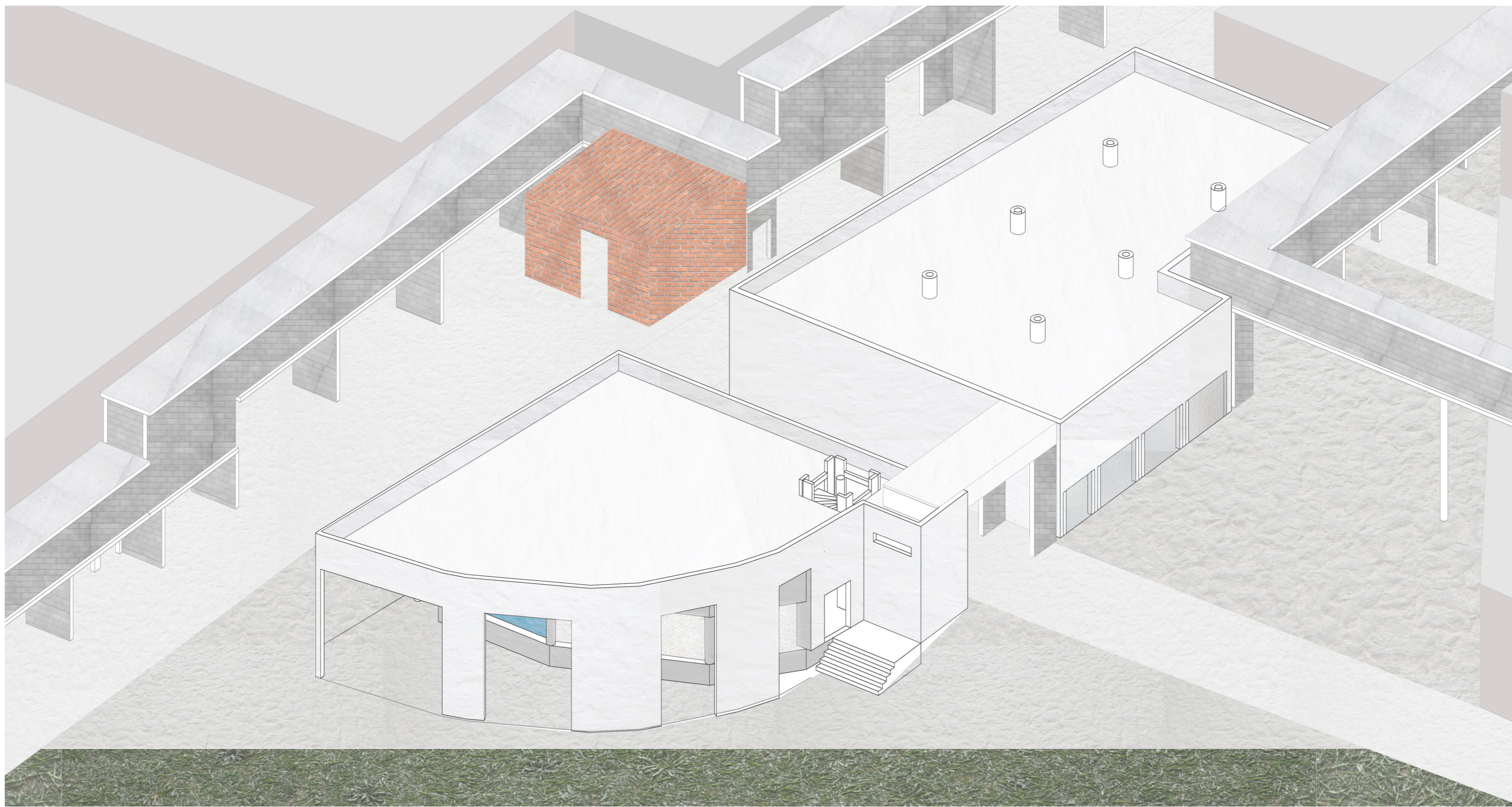
Water treatment system

# Rehabilitation of the Malagueira neighbourhood

The duct, the public space and the water

1 2 3 4 5 6

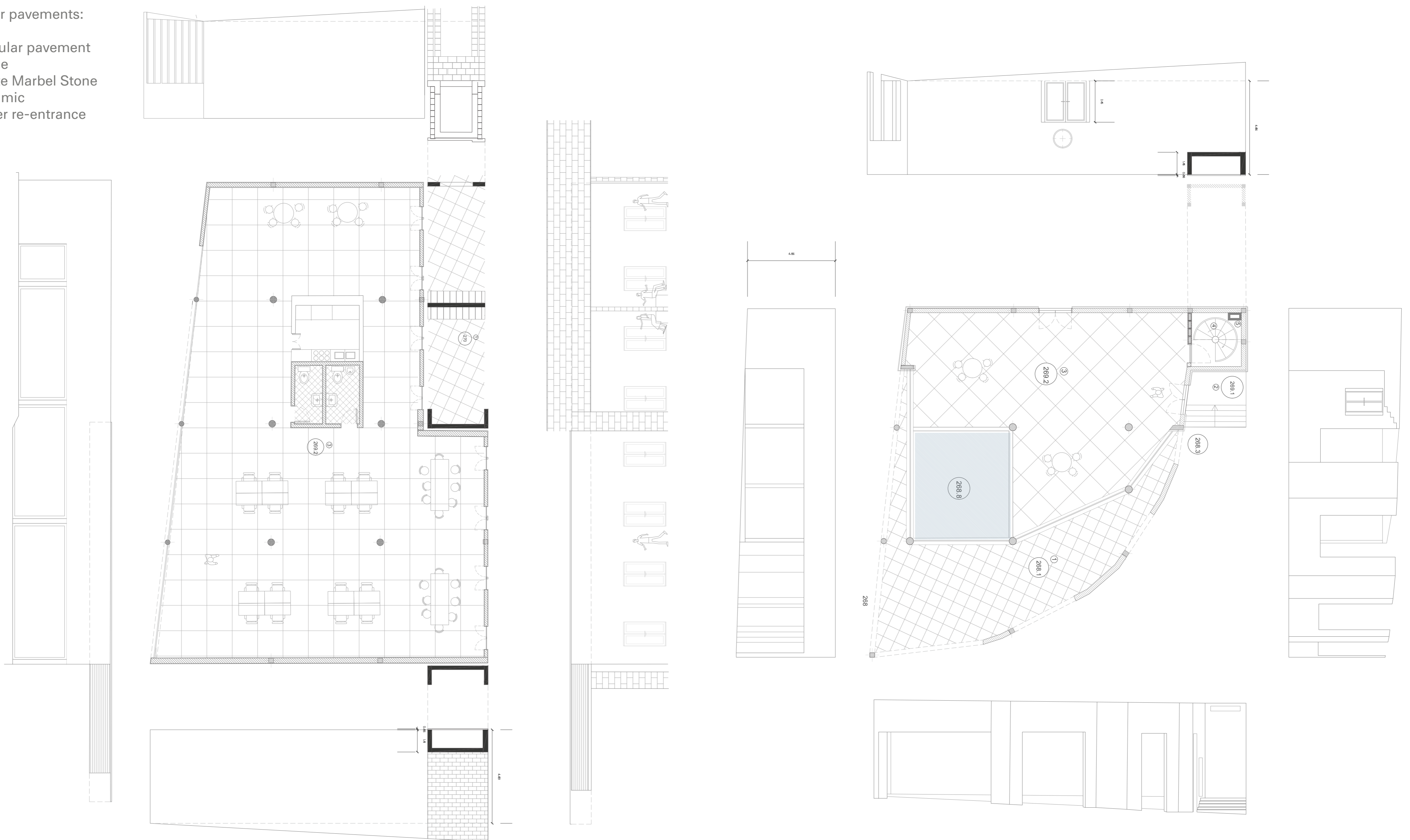
scale 1:50



Materiality.

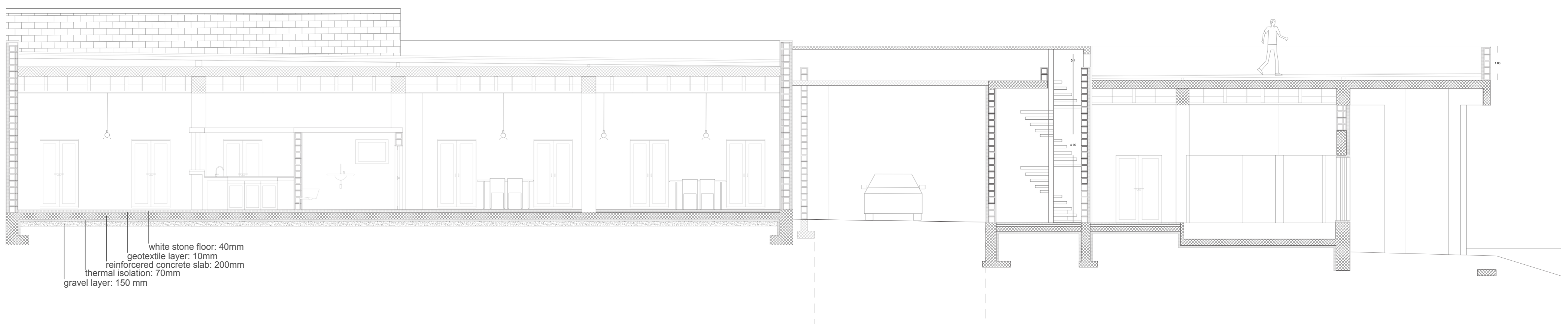
Interior pavements:

1. Irregular pavement
2. Stone
3. White Marbel Stone
4. Ceramic
5. Water re-entrance



Coworking space constructive plan and side views.

Reservoir Constructive Plan and side views.



Complex constructive section.

Daniel Gimenez Morais

Novembro 2023