

Repositório ISCTE-IUL

Deposited in *Repositório ISCTE-IUL*:

2023-01-19

Deposited version:

Publisher Version

Peer-review status of attached file:

Peer-reviewed

Citation for published item:

Mendes, P. & Castro, T. (2019). Business Center de Oliveira de Azemeis, Portugal.

Further information on publisher's website:

<https://www.imaginewata.com/globalassets/medias/wata/ecatalogues/wata-edition-2019.html?ts=638005574450000000>

Publisher's copyright statement:

This is the peer reviewed version of the following article: Mendes, P. & Castro, T. (2019). Business Center de Oliveira de Azemeis, Portugal.. This article may be used for non-commercial purposes in accordance with the Publisher's Terms and Conditions for self-archiving.

Use policy

Creative Commons CC BY 4.0

The full-text may be used and/or reproduced, and given to third parties in any format or medium, without prior permission or charge, for personal research or study, educational, or not-for-profit purposes provided that:

- a full bibliographic reference is made to the original source
- a link is made to the metadata record in the Repository
- the full-text is not changed in any way

The full-text must not be sold in any format or medium without the formal permission of the copyright holders.

OPEN YOUR VISION

Edition
2019

WATA WORLD
ARCHITECTURE
TECHNICAL
AWARD

EDITION
TECHNAL
270, rue Léon Joulin
BP 63709
31037 Toulouse Cedex 1
France

CREATION
BBDO Barcelona

WRITING
Descriptive texts of the projects and translation:
Internal team

PRINTING
Printer Alias Print
Toulouse, France

EDITION COPYRIGHTS
TECHNAL

PLANS COPYRIGHTS
Architecture agencies responsible of their own

PHOTOGRAPHIES COPYRIGHTS
Authors mentioned in the book

ALL RIGHTS RESERVED
Total or partial reproduction prohibited without authorisation

DOCUMENT NUMBER
TDC63111

Printed in 2019

In 2020, Technal will celebrate its 60th anniversary. The brand has grown throughout its history all over the world and our products are installed daily in more than 40 countries.

Since the very beginning, the brand has paid particular attention to the needs of architects. They push the boundaries and force us to progress. The world is globalized, architecture as well. It's quite naturally that our long-standing partners pressed us to create the World Architecture Technal Award.

After months of work, we are very happy to present to you, for this 1st edition, the selection of an international jury under the presidency of the Zaha Hadid agency.

We wish to warmly thank the Jury, for the exchanges, their difficult work as well as their sound advice.

Beyond the final result, it is to all our partners (customers, architects, ...) that we dedicate this event, the first of a long list.

So we give you an appointment at the second edition in 2021 to discover new projects and new categories. The "Sustainability", recommended by the jury, will be part of it. It can be more natural as it highlights our commitment to reduce CO₂ emissions, particularly, but not only, through the use of low carbon aluminium Hydro CIRCAL 75R.

Alexandre Bistes
Technal Brand Director



“Transparency may be an inherent quality of substance, as in a glass curtain wall; or it may be an inherent quality of organisation.” (Colin Rowe / Robert Slutzky: “Transparency” 1963)

Transparency is usually referred to as a material property, most commonly associated with glass. However, understood in a more conceptual way, it can be a quality inherent to a spatial organisation and thus become a tool for generating a more complex spatial order.

By applying techniques such as layering, superimposing, folding and intertwining, complex assemblages of diverse and multi-layered spatial conditions are created, where categories such as solid and void, private and public, city and nature - traditionally perceived in dialectic opposition - are juxtaposed in new and unexpected ways.

Apart from the skilful use of light and materiality, it is these spatial qualities which many of the Laureate Projects of the first edition of WATA demonstrate. This manifests itself in varied ways, such as mini-campus with urban-like qualities of diversity; complex assemblages of historic structures with contemporary interventions; folded blocks superimposed onto themselves; or solids carved-out and clad with multi-layered, adoptable facades.

In their simultaneity of different conditions these spaces avoid being deterministic and in their deliberate ambiguity allow for multiple readings. They thereby invite and encourage interpretation and adoption, giving its users the ultimate freedom to engage in creative, ever-changing and unforeseeable manners.

Fabian Hecker
Zaha Hadid Architects

Edition
2019



Fabian HECKER - PRESIDENT
ZAHA HADID – Architecte, UNITED KINGDOM



Ramon ESTEVE
Ramon ESTEVE Arquitectura y Diseño, SPAIN



Margarida CALDEIRA
Broadway Malyan, PORTUGAL



Benjamin PIPER
Killa Architectural Design, DUBAI



Aurélie VERNON
Kengo Kuma – Architecte, FRANCE



Chee Kiang TAN
DP Architects, SINGAPORE



Abin CHAUDHURI
ABIN DESIGN – Studio, INDIA

INDEX

TEACHING AND CULTURE

AWARD School Campus L'impèrnal, Luzech, France	p. 14
MERIT High School, La Plaine Saint-Denis, France	p. 20
PARTICIPANTS	p. 26

INDIVIDUAL HOUSING

AWARD Family Home Calders, Barcelona, Spain	p. 40
MERIT Maison G, Escamps, France	p. 46
PARTICIPANTS	p. 52

COLLECTIVE HOUSING

AWARD Montmartre Housing, Paris, France	p. 30
PARTICIPANTS	p. 36

EXTENSION

AWARD Head Office of the Departmental Federation of Energies, Cahors, France	p. 56
PARTICIPANTS	p. 70

RENOVATION

AWARD
University Centre, Cahors, France

p. 64

PARTICIPANTS

p. 70

LEISURE AND SPORTS

AWARD
Efanor Sports Centre, Matosinhos, Portugal

p. 86

PARTICIPANTS

p. 92

SKYSCRAPERS

AWARD
UBL Towers Karachi, Pakistan

p. 106

PARTICIPANTS

p. 112

TERTIARY OFFICES AND SHOPS

AWARD
Business Center de Oliveira de Azemeis, Portugal

p. 74

PARTICIPANTS

p. 80

UPCOMING ARCHITECTS

AWARD
Wood House, Anglet, France

p. 96

PARTICIPANTS

p. 102

TECHNAL AWARD

AWARD
Merchant House Boutique Hotel Al Noor, Bahrain

p. 116



School Campus L'impèrnal,
Luzech, France



TEACHING AND CULTURE

AWARD
MERIT
PARTICIPANTS

p.14
p.20
p.26

AWARD TEACHING AND CULTURE

School Campus L'impèrnal, Luzech,
France

Architect Agency
LCR Architectes

Associate
Sol & Cité

Owner
Conseil Départemental du Lot

Technal Metal Builder
Realco

The Lot valley has perpetuated, since the 13th century, constructive principles based on the values of the territory and common sense: the play of terraces linked to topography and simple, compact architecture, using local and raw materials. This approach naturally inspired the design of the Hall of residence Impèrnal in Luzech, which includes a secondary school with 450 students that can be extended to 600, a school group with 240 students, a shared restaurant and three staff quarters. The land has a slope of 122 to 99 m in its West/East orientation. "Sculpted it into three terraces, structured by a large stone and wooden walls," the work of adapting the steep gradient, combined with GEODE curtain walls and SOLEAL doors and windows, allows views of the large landscape environment at each level.

Thin, straight and elegant, the aluminum profiles of GEODE and SOLEAL blend into the building envelope. The glazing is maximized for generous natural lighting, bringing light to the various functions of the Hall of residence:

- The two levels are punctuated by patios for total transparency. These patios, which are natural, bright and intermingling to the building, are offering a look at the inner operations and at the permanent link with the environment.
- The classrooms are all facing North and South. SOLEAL frames designed from floor to ceiling are integrating edge-to-edge glazing. On the south side, the sun protection is reinforced by passive glazing.
- The dining rooms are oriented to the south-east accessible from the square, allowing to have lunch while enjoying the views of Luzech. A real break before resuming afternoon classes.

The architects' choice was based on environmentally friendly materials, working with local companies with recognized expertise. For example, the Realco metal builder manufactured all the TECHNICAL aluminium joineries. Wood was used for the frames and clothing on the first level, limestone for the gabion and cladding supports on the ground floor and concrete to complete the work. Wood, limestone and concrete are combined with sandblasted grey aluminium and glass from TECHNICAL joineries. Few materials were used to create a sober, simple project and an "ethnic" link with the place. The green roofs complete the insertion into the site and improve thermal comfort.



AWARD TEACHING AND CULTURE

School Campus L'impernal, Luzech,
France



JURY COMMENTS:

"The atmosphere is nice and the context is beautiful.

The architecture is refined, not overly austere.

The concrete slab sitting on the wood, stands out in perfection.

The rigidity of the space comes from the modularity. The campus is not only interesting but also it creates a special space."



AWARD TEACHING AND CULTURE

School Campus L'impernal, Luzech,
France



QUOTE

"The impressive clarity of the project and diversified views."



Xavier Ratynski



Architect Agency
LCR Architectes

Associate
Sol & Cité

Owner
Conseil Départemental du Lot

Technal Metal Builder
Realco

Technal Solutions used
GEODE Curtain Walls,
SOLEAL doors and chassis

Photographer
Mathieu Ducros

MERIT TEACHING AND CULTURE

High School, La Plaine Saint-Denis,
France

Architect Agency
Brenac & Gonzalez & Associés

Owner
Région Île-de-France - Unité Lycées

Technal Metal Builder
France 2000

This new school combines an international high school and its boarding school, located in the heart of the ZAC Montjoie, south of the rapidly changing city of Saint-Denis. By its size and its large-scale programme of 15,500 square meters, it represents a dual challenge, urban and architectural, for this eco-district. The Brenac & Gonzalez & Associés agency wanted to imagine a project that would be open to the city and would contribute to the daily life of the inhabitants.

The buildings rise up to reveal perspectives and visual connections between the public space, the square, the courtyard, the courtyard, the courtyard or the interior gardens. This transparency is reflected in the facade thanks to GEODE curtain walls that have been installed on the double-height, space of the reception hall and the galleries on the ground floor. Suspended, cantilevered, the latter building completes the geometric figure on Filletes street.

A technical work has been carried out by France 2000 metal builder on these GEODE curtain walls. The company and the architect worked closely together to integrate, on the outside, wooden pilasters that cover the aluminium uprights of TECHNAL solutions.

On the inside, the slender columns act as stiffeners. To the south, the vertical wooden slats, cut into curves, provide protective shade for vocational education rooms. The kinetic effect amplifies the perception of movement and undulation. The façades are treated as an interlacing of moving ribbons. Passing gradually from the outside to the inside, these plans are enhanced by a change of materials according to their applications and positions. On the city side, white textured concrete panels cover the walls, on the inside the grey wooden borders the playground. The play between aluminium and wood is reinforced by the TECHNAL colour choice for the joinery. A bronze tonality blended into the wooden envelope and contrasts with white concrete.



MERIT TEACHING AND CULTURE

High School, La Plaine Saint-Denis,
France



JURY COMMENTS:

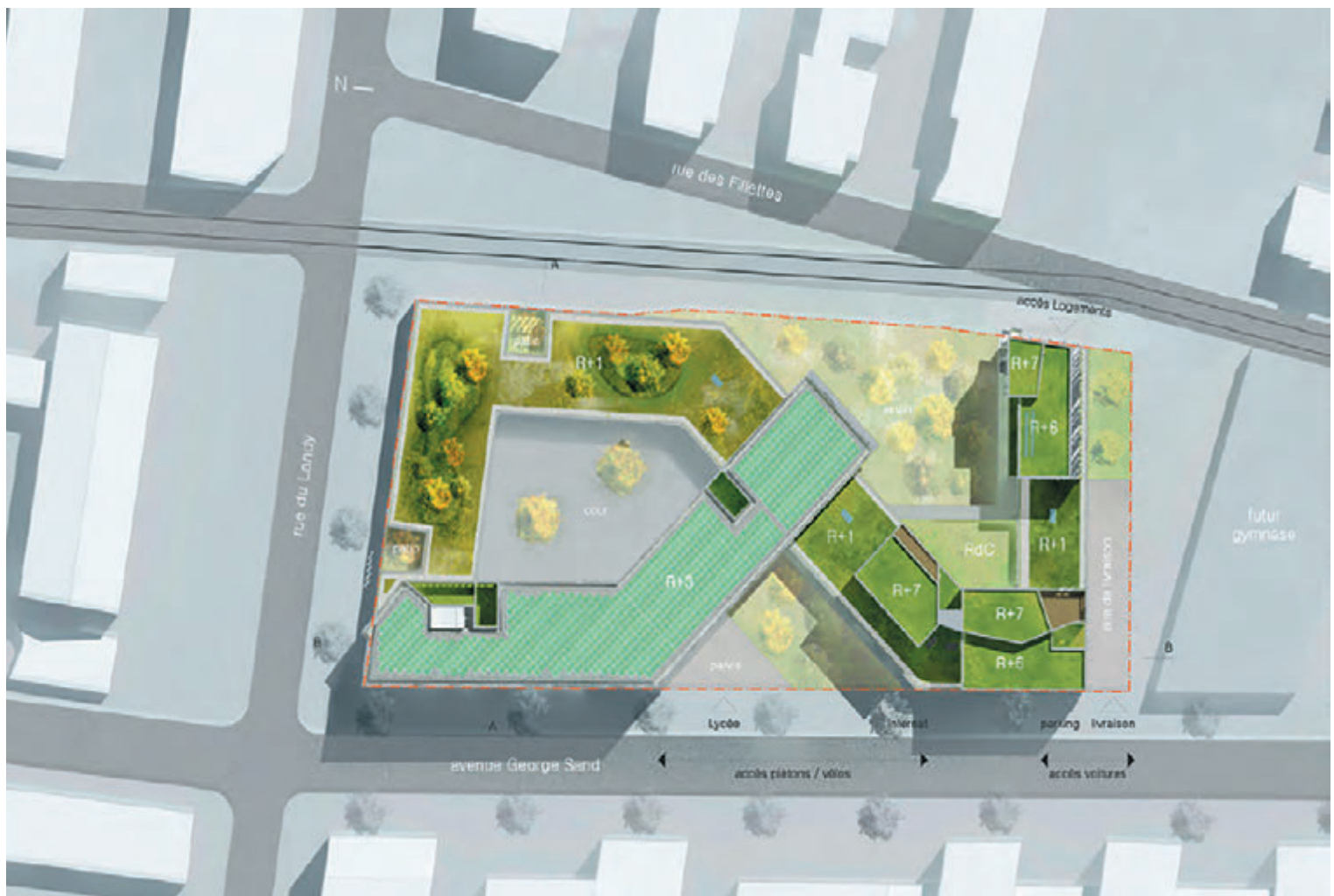
"The clever use of timber makes this a minimalist yet modern project. The humane used elements demonstrated sense of fun explorations combined with tactile quality. The materiality in the project was quite brave.

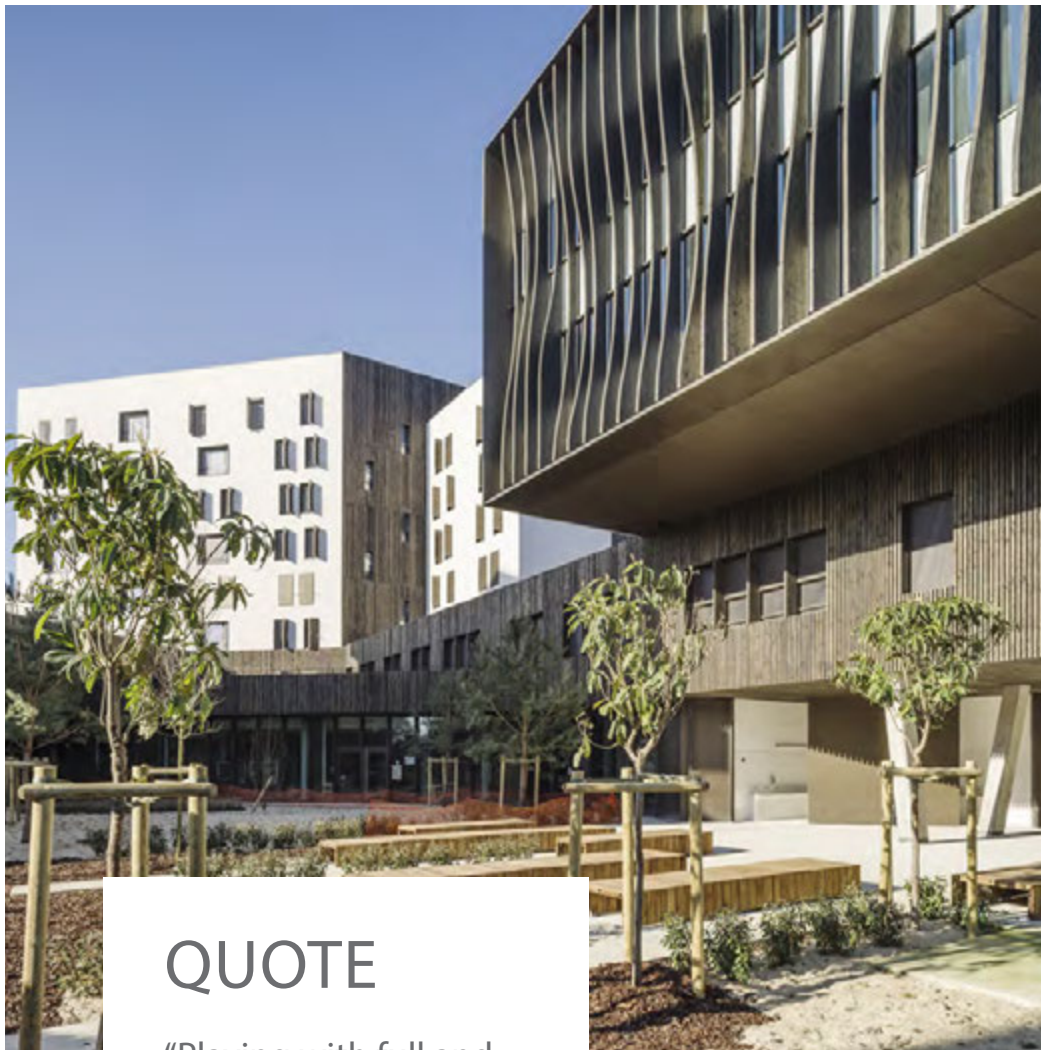
The façade treatment and interiors were playful yet elegant. The write up about the project was quite clear and captivating. The connection to the urban context was interesting and the volume of the project made an impact."



MERIT TEACHING AND CULTURE

High School, La Plaine Saint-Denis,
France





QUOTE

"Playing with full and empty volumes."



Xavier Gonzalez

Architect Agency
Brenac & Gonzalez & Associés

Owner
Région Ile-de-France - Unité
Lycées

Technal Metal Builder
France 2000

Technal Solutions used
GEODE Curtain walls and
SOLEAL doors

Photographer
Stefan Tuchila

PARTICIPANTS TEACHING AND CULTURE

BARDIA PUBLIC SCHOOL
Sydney, Australia

Architect Agency: TKD Architects
Owner: School Infrastructure NSW
Technal Metal Builder: Safetyline Jalousie



MASSANA SCHOOL . ART AND DESIGN
CENTRE
Barcelona, Spain

Architect Agency: Estudi Carme Pinós
Owner: UTE Massana (Acciona-Copcsa)
Technal Metal Builder: García Faura



MUSEUM OF PÊCHERIE
Fécamp, France

Architect Agency: Basalt Architecture
Owner: City of Fécamp
Technal Metal Builder: Marchand



EFANOR PRIVATE SCHOOL, MATOSINHOS
Senhora Da Hora, Portugal

Architect Agency: Paula Santos
Arquitectura, Lda
Owner: Belmiro De Azevedo Foundation -
Efanor School, Trigo João
Technal Metal Builder: Melo Sousa
Serralharia - Unipersonal Society, Lda



LIBRARY PERE ANGUERA
Reus, Spain

Architect Agency: Joan Tous Gomà -
Camps, Gabriel Bosques Sánchez
Owner: Private
Technal Metal Builder: Aluminios Gómez
Tarragona



TABAKALERA, INTERNATIONAL CENTRE
FOR CONTEMPORARY CULTURE
Donostia, Spain

Architect Agency: Jon Montero Madariaga,
Naiara Montero Viar
Owner: Private
Technal Metal Builder: Vifasa

NATIONAL COLLEGE FOR HIGH SPEED
RAIL
Doncaster Campus, UK

Architect Agency: Bond Bryan Architects
Owner: Jason Allibone
Technal Metal Builder: Dortech





Montmartre Housing,
Paris, France



COLLECTIVE HOUSING

AWARD
PARTICIPANTS

p.30
p.36

AWARD COLLECTIVE HOUSING

Montmartre Housing, Paris
France

Architect Agency
Atelier Kempé Thill

Associate
Fres Architects

Owner
Paris Habitat OPH

Technal Metal Builder
France 2000

The TECHNAL design office worked closely with France 2000 metal builder and Atelier Kempé Thill to design a special loggia closure for the 50 social housing units "Montmartre Housing". "The work is the result of in-depth research to find the equivalent of the new urban villa in contemporary conditions of social housing in France. Its compact shape has made it possible to achieve economies of scale and thus offer winter gardens," explains architect André Kempé.

The 2268 square meters of TECHNAL custom loggias closures allow occupants to benefit from an additional bright and wind-protected room. Each apartment has a double angle orientation. This location, combined with the loggias without aluminium posts, offers varied views of René Binet Park and its surroundings. The border between inside and outside is completely blurred, naturally extending the kitchen and living/dining room into the urban landscape. TECHNAL aluminium joineries subtly combined with metal cladding.

Their identical "champagne" colour creates a continuous writing on the facade and reinforces the noble character of these social housing units.

Loggias closures also create a buffer space, which helps to balance the energy balance of the homes. 108 SOLEAL 65 windows and 80 LUMEAL minimalist sliders with concealed opening sash to complete the joinery. Thermally efficient, they contribute to inner well-being. All these TECHNAL solutions also enhance the acoustic performance of living rooms by approximately 17 dB. Located in the immediate vicinity of the ring road, the buildings protect occupants from road traffic noise.

Undertaken on behalf of the social landlord Paris Habitat OPH, this project is a small set of two volumes R+5 (from studio to 4 bedrooms flats), linked together by a collective court. It also houses a dental practice, a motherly and Child Protection Centre and an underground car park. It is located in Paris, Porte Montmartre, in a changing area along the ring road



AWARD COLLECTIVE HOUSING

Montmartre Housing, Paris
France



JURY COMMENTS:

"Energy efficiency is well thought. It is a very smart design which offers good acoustic and user comfort. Plan is sensitive to the location, with smart block treatment and I don't mind staying in this unit, it offers a lot of privacy, grand views and an incredible outside space."



AWARD COLLECTIVE HOUSING

Montmartre Housing, Paris
France



QUOTE

"The project challenges the
norm and amenity."



André Kempé

Architect Agency
Atelier Kempe Thill

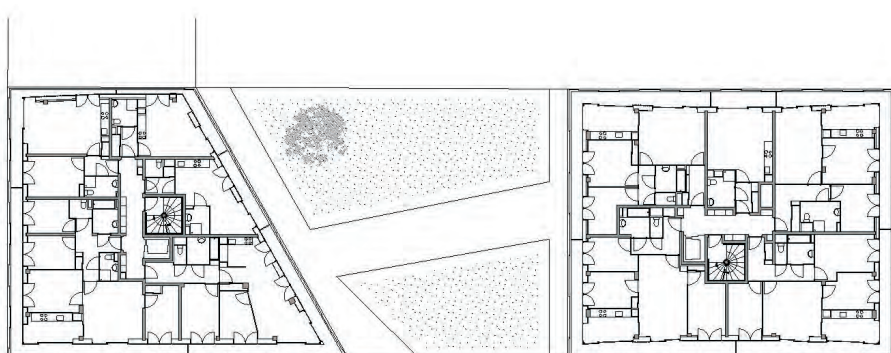
Associate
Fres

Owner
Paris Habitat OPH

Technal Metal Builder
France 2000

Technal Solutions used
Custom loggias closures, SOLEAL
inward opening frame, LUMEAL
Minimal sliding system with concealed
opening sash

Photographer
Ulrich Schwarz



PARTICIPANTS COLLECTIVE HOUSING

ISLET K, ECO-NEIGHBORHOOD
Fresnes, France

Architect Agency: Daquin et Ferrière
Architecture
Owner: Valophis Habitat
Technal Metal Builder: Stim Technibat



GRAND VIEWS
Dubai, United Arab Emirates

Architect Agency: Chawla Architects
Owner: Private
Technal Metal Builder: M/s. National
Aluminium & Steel Factory

BLOCK OF 95 APARTMENTS
Calpe, Spain

Architect Agency: J. Ignacio Fuster. Vam10
arquitectura y paisaje
Owner: Private
Technal Metal Builder: Construcciones
Metálicas Barceló



66 APARTMENTS AT MAHOON
Manama, Bahrain

Architect Agency: Gulf House Engineering,
Ahmed Bucheery
Owner: Amlak SIO Development Company
Technal Metal Builder: Mannai Alum & Glass

GODIVA PLACE
Coventry, UK

Architect Agency: Lewis & Hickey
Owner: Private
Technal Metal Builder: Casu Consulto



LUNA BY MERITON
Lewisham, Australia

Architect Agency: PTW Architects
Owner: Meriton
Technal Metal Builder: Safetyline Jalousie

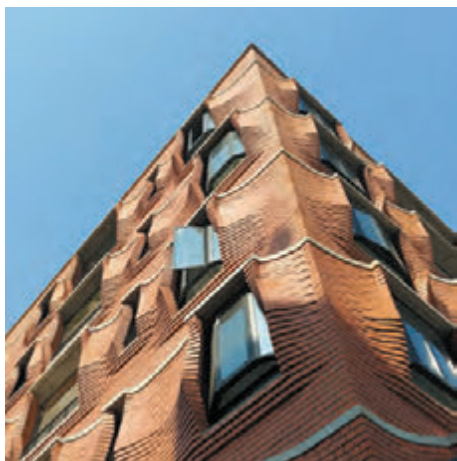
MILLENNIUM ESTATES
Dubai, United Arab Emirates

Architect Agency: Chawla Architects
Owner: Private
Technal Metal Builder: M/s. National
Aluminium & Steel Factory



MIXED USED DEVELOPMENT - DANAAT
AL MADINA
Isa Town, Bahrain

Architect Agency: Gulf House Engineering,
Ahmed Bucheery
Owner: Private
Technal Metal Builder: Aluminium services



SIENNA
Hyderabad, India

Architect Agency: SP+a
Owner: Leelaa Projects
Technal Metal Builder: Razzle

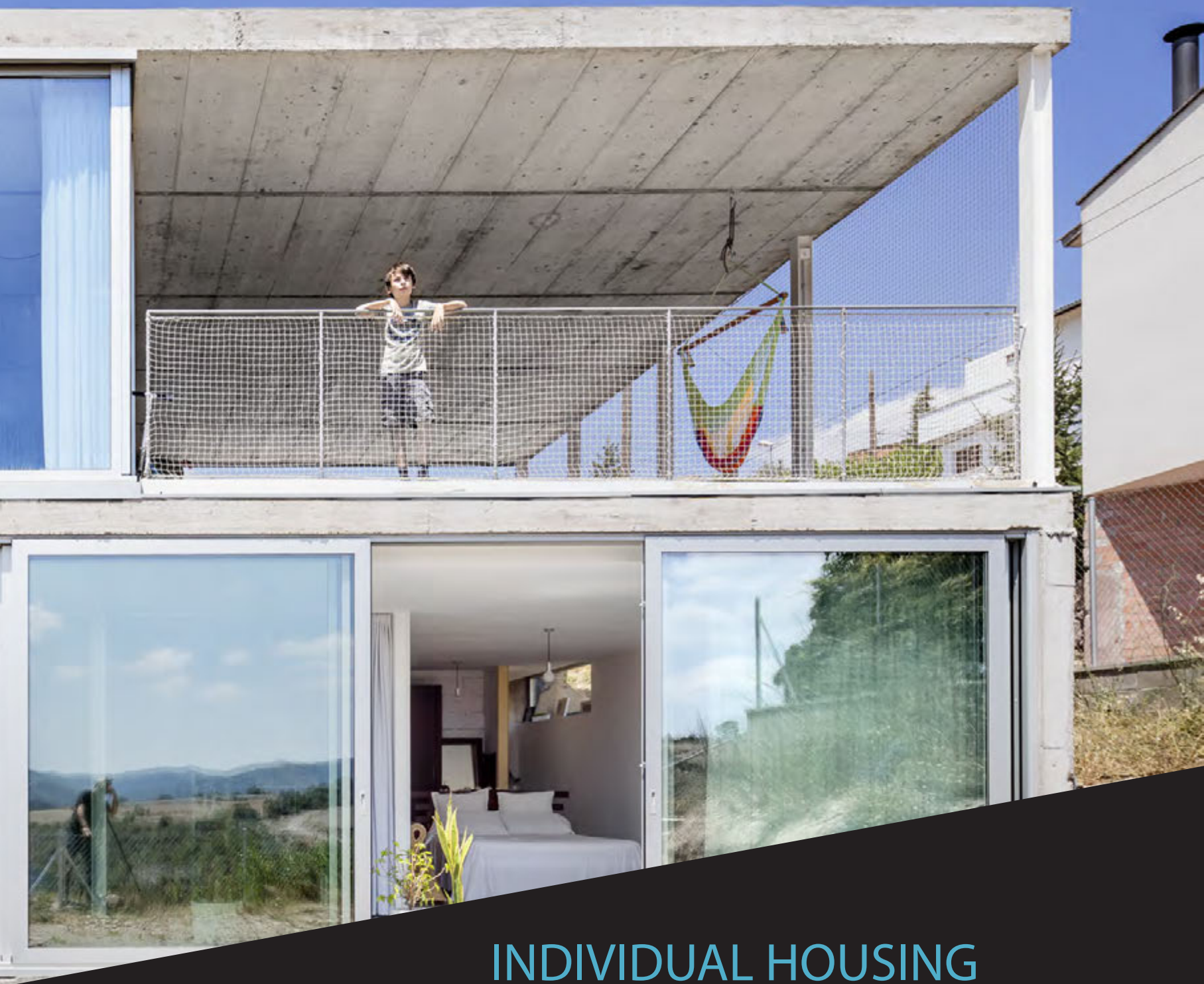


SOBHA HARTLAND ESTATES VILLAS
Dubai, United Arab Emirates

Architect Agency: PNC Architects
Owner: Sobha Llc
Technal Metal Builder: Sobha Facades Ind Llc



Family Home Calders,
Barcelona, Spain



INDIVIDUAL HOUSING

AWARD
MERIT
PARTICIPANTS

p.40
p.46
p.52

AWARD INDIVIDUAL HOUSING

Family Home Calders, Barcelona,
Spain

Architect Agency
Joan Ramon Pascuets, Mònica Mosset

Owner
Private

Technal Metal Builder
Aluantrax

This house of 240 square meters, executed with a budget of 215,000 euros, is in the limit of the urban nucleus of the population and enjoys spectacular views of the natural park of Sant Llorenç del Munt i l'Obac. To highlight the privileged environment, a structure of horizontal concrete slabs and H-shaped steel pillars has been created to free up the space and eliminate the partitions, generating continuity and diluted limits between the interior and the exterior.

This permanent visual connection is achieved by proposing a regular parallelepiped closed to the north and east, and completely open to the garden and landscape to the south and west.

The aluminium joineries are installed from wall to wall and from floor to ceiling, generating a transparent facade serves as a viewpoint. Far from being limited to visual perception, this inside-out relationship extends to the use of spaces, allowing owners to move freely between the inside and the outside to enjoy each place depending on the time of day, the time of year or the weather conditions.

The aesthetics of the façade and interiors are deliberately "unfinished". We had to build with less than 900 € per square meter - comments Joan Ramon Pascuets - therefore, everything we have placed in the work had to be essential. We have mainly ensured the comfort for the users and the maximum energy efficiency of the house, leaving to future interventions eventual improvements of the finishes".

The ground floor is an L shape with a side of 12 meters and another of 9 meters with the open corner. It was necessary to install a sliding system capable of opening the house completely and at the same time maintain optimum insulation and security. GALENE sliders have been installed, which allow the installation of large windows and ensure easy manoeuvrability, thanks to its lifting system. On the first floor, on the other hand, the visual lightness of the aluminium profiles of the SOLEAL system was privileged, providing high insulating performance with a very refined aesthetic.



AWARD INDIVIDUAL HOUSING

Family Home Calders, Barcelona,
Spain



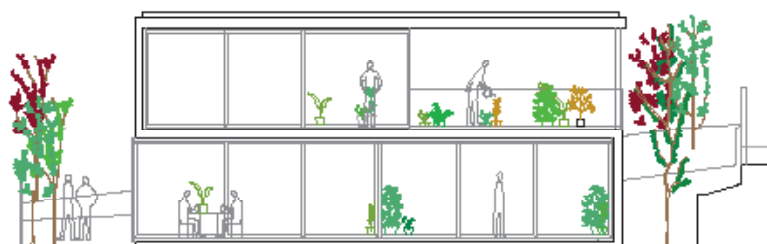
JURY COMMENTS:

"The home gets activated by opening the corners. The peripheral outside space was well used. The low budget was well used. There were no partitions which makes the family well connected with each other. The house has a sense of self built quality. The cables dangle down demonstrating a very authentic architecture. The project has a touch of Heath Robinson's self-built quality."



AWARD INDIVIDUAL HOUSING

Family Home Calders, Barcelona,
Spain



QUOTE

"Each window responds to an orientation, a light, a point of view on the volcanic landscape."



Mònica Mosset



Joan Ramon Pascuets

Architect Agency
Joan Ramon Pascuets, Mònica Mosset

Owner
Private

Technal Metal Builder
Aluantrax

Technal Solutions used
GALENE lift and slide, SOLEAL sliding systems

Photographer
Adrià Goula



MERIT INDIVIDUAL HOUSING

Maison G, Escamps,
France

Architect Agency
Atelier d'Architecture Laurent Tournié

Owner
Private

Technal Metal Builder
Miroiterie Point Verre

For this project located on the edge of the village of Escamps (46) in the Causses du Quercy, the project owner, also an architect, built a contemporary concrete house which faces the "cayrous", dry stone walls. This 105 square meters program is equipped with two 17 m long stone walls.

Two large SOLEAL sliding systems with 3-tracks pocket windows providing a total transparency to the valley. These joineries, implemented by the metal builder Miroiterie Point Verre, form the basis of the space process. Once opened, they disappear into the walls and connect the two terraces and the main room. TECHNICAL sliding systems, combined with the use of identical stones on the interior and exterior floors, multiply the built area, which reaches nearly 300 square meters. The occupants lose the notion of in/out spaces. On sunny days, they can freely enjoy the landscape and swimming pool from the backyard. The thin, clean lines of the SOLEAL (sliding systems and fixed frames) increase transparency.

Each solution is the result of rigorous work on the light by architect Laurent Tournié. Example: the design and implementation of the fixed frame of an annexe intended to become the third chamber, which is 3.08 m long and 2.26 m high.

To reduce the aluminium seen, the metal builder has divided the joinery into two parts. They are connected by a black glued joint that discreetly disappears. Placed outside, the frame plays with the lights and the changing reflections of the courtyard.

To establish the chromatic range, it was a question of harmoniously combining the shades of white of the walls with those of the natural stones walls and the floors. The choice of colour for the discreet profiles of the frames was therefore naturally white.



MERIT INDIVIDUAL HOUSING

Maison G, Escamps,
France



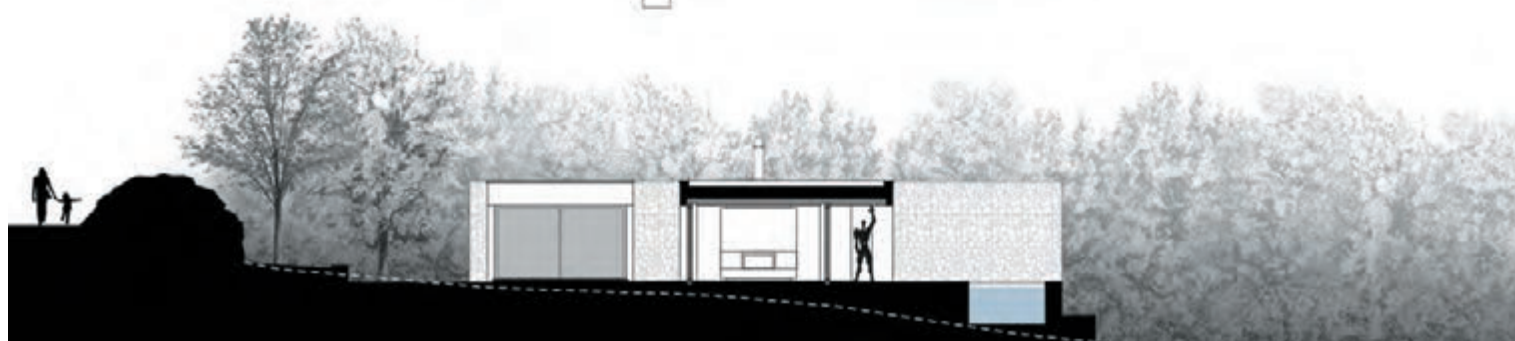
JURY COMMENTS:

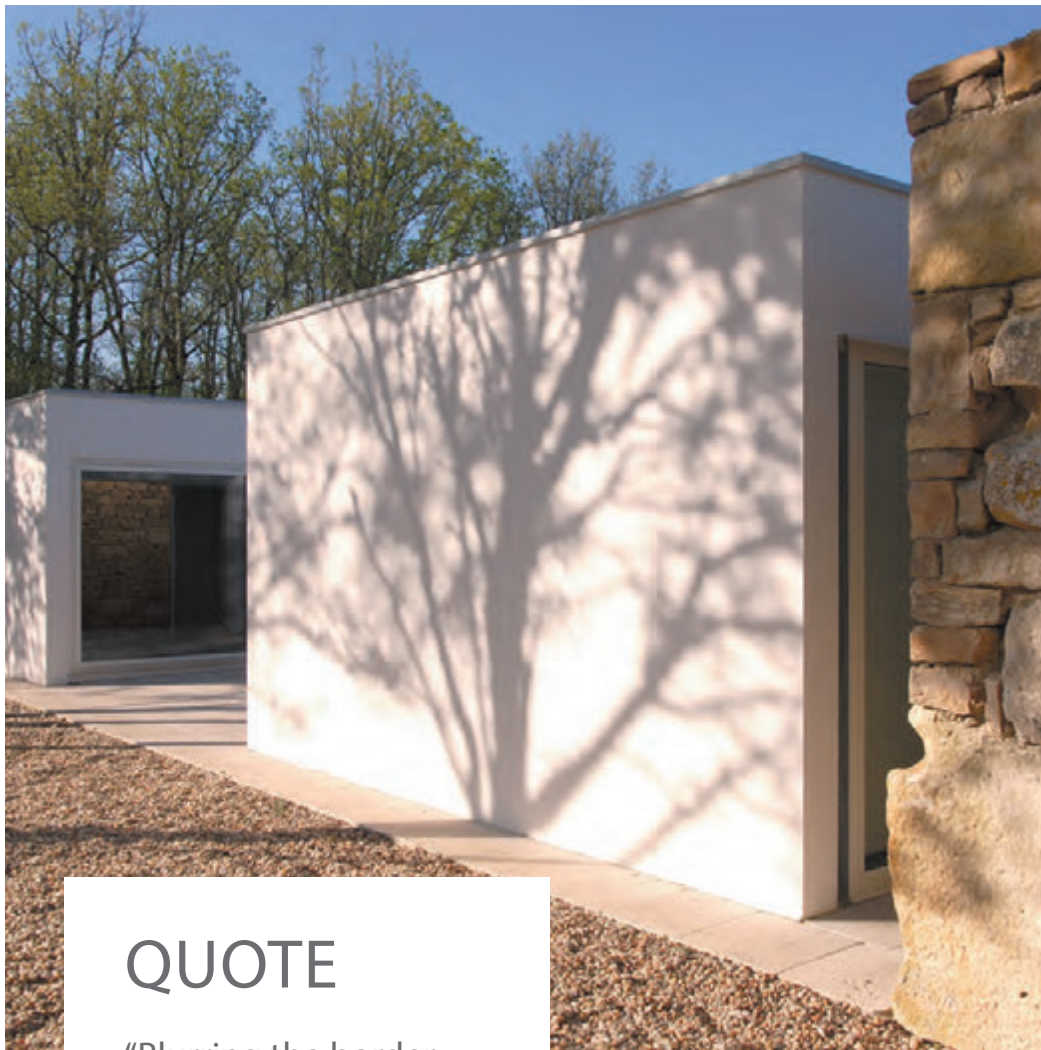
"A balance between tradition and modernity. This house built of stone blends elegantly into the site and preserves its rural memory. The attention to detail and the large framed views, which open completely with a set of sliding system, give this building a high quality of use."



MERIT INDIVIDUAL HOUSING

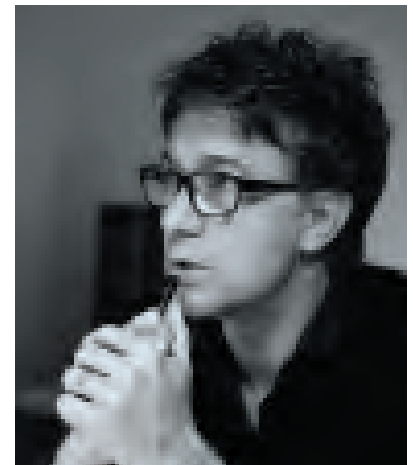
Maison G, Escamps,
France





QUOTE

"Blurring the border
between inside and
outside."



Laurent Tournié

Architect Agency
Atelier d'Architecture Laurent Tournié

Owner
Private

Technal Metal Builder
Miroiterie Point Verre

Technal Solutions used
SOLEAL sliding systems and fixed
windows

Photographer
Laurent Tournié

PARTICIPANTS INDIVIDUAL HOUSING

CASA CÁSCARA DE MARUNYS

Sant Joan Les Fonts, Spain

Architect Agency: Unparell d'arquitectes
Technal Metal Builder: Plantalech SL

SHORT-LISTED



HOUSE M

Meudon, France

Architect Agency: DDA - Devaux & Devaux
Architectes
Technal Metal Builder: L'Expert en
Bâtiment

SHORT-LISTED



WOOD HOUSE

Anglet, France

Architect Agency: Beltza Architecture
Technal Metal Builder: Labastere 64

SHORT-LISTED



FALFOSA HOUSE

Faro, Portugal

Architect Agency: AAP - Associated
Architects Partnership
Technal Metal Builder: JPO Aluminios



GR HOUSE

Sever Do Vouga, Portugal

Architect Agency: Paulo Martins
Arquitectura & Design
Technal Metal Builder: Metalcôvo, S.A.



DS_HOUSE

Jakarta, Indonesia

Architect Agency: Studio Air Putih
Technal Metal Builder: Pt Star Jaya Factory

HOUSE ON HILL
Wayanad, India

Architect Agency: Arun Nalapat
Associates
Technal Metal Builder: Razzle



« MAISON TOI »
Villeneuve d'Ascq, France

Architect Agency: Toyos Mos Moyos
Technal Metal Builder: France Verre



JE HOUSE
Surabaya, Indonesia

Architect Agency: Paulus Setyabudi
Architects
Technal Metal Builder: PT. Artemi Zenith
International



MIRA OASIS
Dubai, United Arab Emirates

Architect Agency: National Engineering
Bureau
Technal Metal Builder: Das Fenster



SHUBHASHRI
Bangalore, India

Architect Agency: SA SW Architecture -
Pramod C
Technal Metal Builder: GSC Glass Ltd.



ESTANCIA MORRO CHICO - MAIN HOUSE
Santa Cruz, Argentina

Architect Agency: RDR arquitectos,
Lucas Maschwitz
Technal Metal Builder: Etneco



Head Office of the Departmental
Federation of Energies, Cahors,
France



EXTENSION

AWARD
PARTICIPANTS

p.56
p.70

AWARD EXTENSION

Head Office of the Departmental Federation
of Energies, Cahors,
France

Architect Agency
Franck Martinez

Owner
Head Office of the Departmental Federation of Energies,
Cahors, France

Technal Metal Builder
Rouergue Aluminium

On the edge of a small arm of the river, facing the peninsula of the Cahors stadium, the new offices of the Lot Departmental Federation of Energies occupies an former vegetable plot. This land in a flood zone led Franck Martinez architecture workshop to raise this 600 square meters structure. He imagined a volume all in length, linked to an old 18th-century building carefully preserved and rehabilitated.

The building is moving towards a rational typology of an office building. Its envelope is punctuated by a regular grid, alternating concrete elements and SOLEAL 65 composition windows. The dynamic configuration of the full and empty spaces contrasts with the existing building and its regular layout with TECHNAL joineries. To protect themselves from the sun, the joineries use fixed metal skylights or motorised blinds depending on the exposure of the east/west façades.

The slim aspect of the profiles and the silk grey colour of the various elements, which is similar to the concrete, allow the openings to disappear entirely in the façade. This effect, "tone on tone", changes the appearance of the building according to the external views. Looking from the sides, the envelope looks smooth but the holes are clearly visible from the front view. Easily recognisable from the street, the facade creates a strong image for the Federation.

Prefabrication work was also essential for this project. Rouergue Aluminium, metal builder, has manufactured identical modules for each office in its workshop. They integrate a fixed frame with transparent glazing and an opening with aluminium sheet infill. The offices are organized on both sides of a central circulation giving rise to two thicknesses of premises. In the east, services, vertical traffic and common premises are favoured. To the west, on the landscaped garden, the various services of the programme alternate with small full height patios.



AWARD EXTENSION

Head Office of the Departmental Federation
of Energies, Cahors,
France



JURY COMMENTS:

"The extensions are very clever. The materiality of the new is the interpretation of the old and the relationship between the two works very nice. The relationship between the two is evident and the small courtyard is very nice. This project demonstrates a nicely extended plan."



AWARD EXTENSION

Head Office of the Departmental Federation
of Energies, Cahors,
France



QUOTE

"Sets of solids and voids
in volume"



Franck Martinez

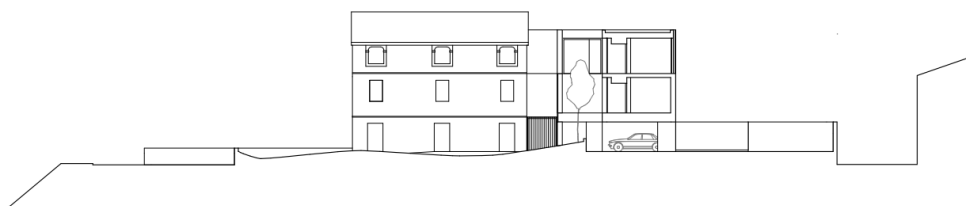
Architect Agency
Franck Martinez

Owner
Head Office of the Departmental
Federation of Energies, Cahors, France

Technal Metal Builder
Rouergue Aluminium

Technal Solutions used
SOLEAL 65 composite assemblies

Photographer
Franck Martinez





University Centre, Cahors,
France



RENOVATION

AWARD
PARTICIPANTS

p.64
p.70

AWARD RENOVATION

University Centre, Cahors
France

Architect Agency
CECO Architectes

Owner
Syndicat Mixte Ouvert du Campus Universitaire Cadurcien

Technal Metal Builder
Realco

The rehabilitation project of the University Centre of Cahors has made it possible to transform a former girls' school dating from 1887 into a mixed facility open to the city and responding to the new challenges of higher education. The agency partially emptied the 4000 square meters building to enhance its original composition and adapt it to the new uses of the ESPE, the University of Toulouse - History of Art and Archaeology, and the Resource Center of Canopé. The wooden floor was replaced by a concrete floor, and the SOLEAL 65 windows and doors replaced the wooden ones. They bring a contemporary spirit while drawing inspiration from the site's historical regulatory routes. The black aluminium of the joinery, the wood of the ceilings, the natural concrete and the stone walls are raw materials that offer consistency to the project.

Meticulous work has been carried out by the metal builder Realco who manufactures the 74 curved tailor-made windows so they perfectly match the existing stone frames. The joineries are designed with concealed openings. The thin width of the profiles is identical to the fixed frames for an overall unit. Their black tint also reinforces the erasure from the outside view. The thermal performance of SOLEAL 65 window, combined with 50 cm thick stone walls, has made it possible to eliminate any additional insulation system. The durability of the walls is ensured and the inertia of the building optimized.

CECO Architects has created a glass gallery overlooking the Garden Court to the west on the ground floor. The GEODE curtain wall stretches over 30 m long and is fitted with 3.5 m high glass panels. Their discreet mullion are hidden behind posts or steel brise-soleil, which bring verticality to the project. The only contemporary extension of this program is an "H" shape, the gallery is the link between the Garden Court and the Honour Court. It opens the shared rooms to the outside and maximises the fluidity of the ways.

Following a historical research work on the evolution and successive extensions of the building, the CECO Architects agency decided to place the Honour Court at the heart of the project, which over the years has become a vast car park. Emptied of its cars, it has returned to the students through the creation of an elevated wooden square integrating accessibility requirements. The other courtyard is levelled to become a garden gently sloping down.



AWARD RENOVATION

University Centre, Cahors
France



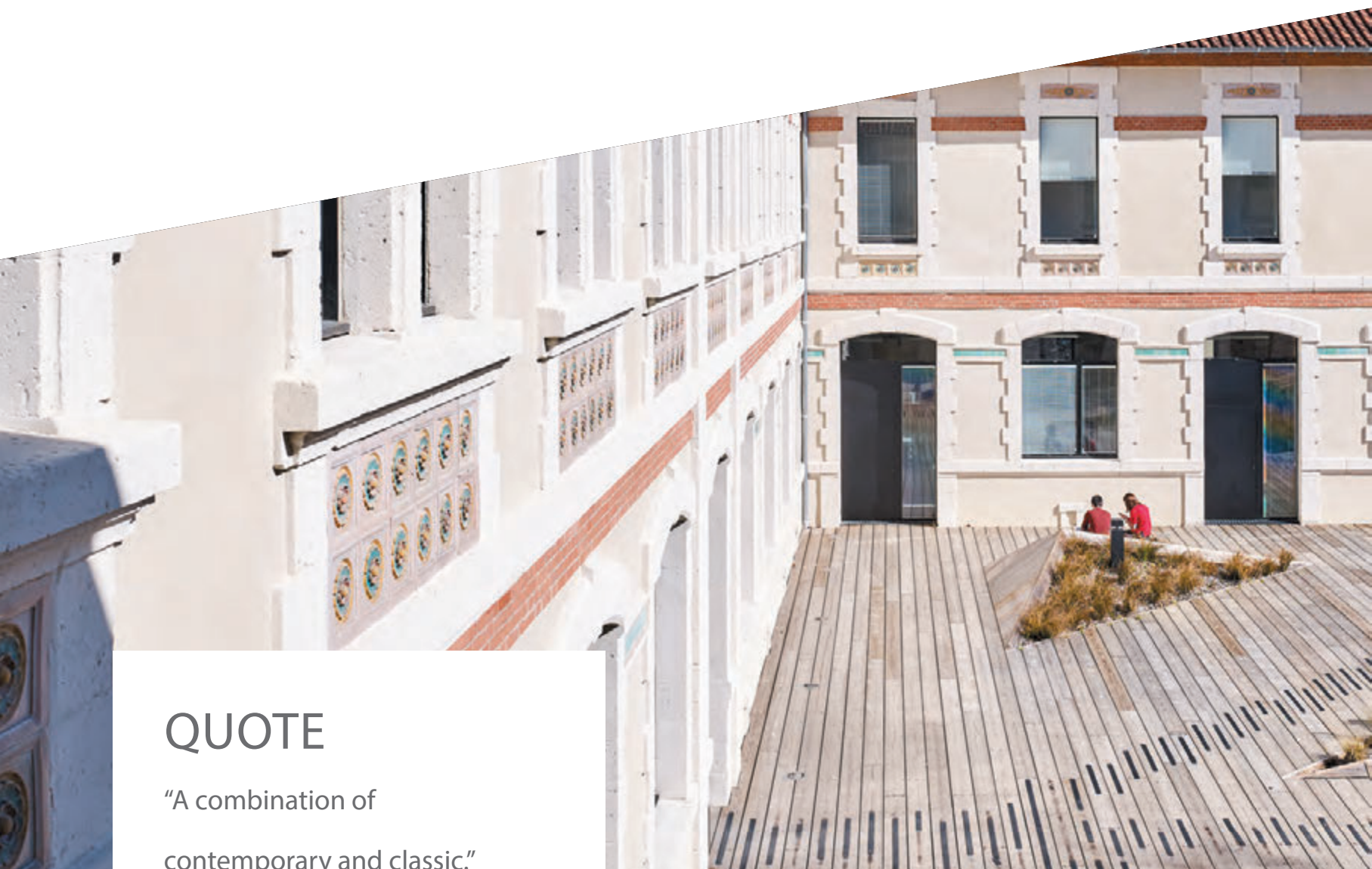
JURY COMMENTS:

"This project has a very strong connection to the renovation, kept it true to the original. I applaud the team as they used contemporary interior. Certainly, a new life has been breathed into the project. The landscape is pleasant, and it's a very nice project."



AWARD RENOVATION

University Centre, Cahors
France



QUOTE

"A combination of
contemporary and classic."





Vanessa Larrère

Architect Agency
 CECO Architectes

Owner
 Syndicat Mixte Ouvert du Campus
 Universitaire Cadurcien

Technal Metal Builder
 Realco

Technal Solutions used
 SOLEAL 65 Windows and Doors and
 GEODE Curtain Walls

Photographer
 Kévin Dolmaire



PARTICIPANTS EXTENSION & RENOVATION

THE NEW GARAGE
Paris, France

Architect Agency: ITAR Architectures
Owner: private
Technal Metal Builder: Miroiterie
Générale de Meaux



DEIA DESIGN SCHOOL
Barcelona, Spain

Architect Agency: ZFA Architecture &
Urban Lab
Owner: private
Technal Metal Builder: Fainsaltec



POUET
Valencia, Spain

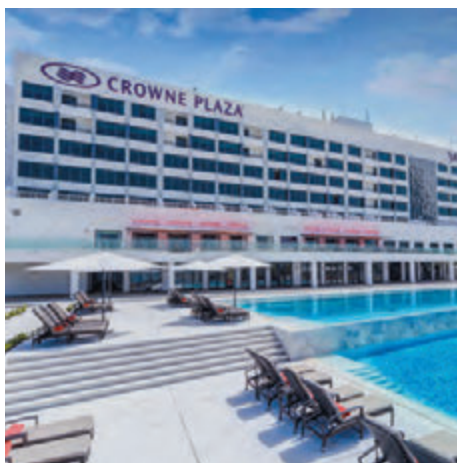
Architect Agency: Juan Marco Arquitectos
Owner: private
Technal Metal Builder: Vincent Torres



SHORT-LISTED

CROWNE PLAZA HOTEL, MUSCAT
Shatti Al Qurum, Oman

Architect Agency: Hoehler & alSalmy
Owner: Crowne Plaza Hotel, Muscat
Technal Metal Builder: Abdul Rahman



MERCHANT HOUSE BOUTIQUE HOTEL
Al Noor, Manama, Bahrain

Architect Agency: Gulf House Engineering,
Ahmed Bucheery
Owner: private
Technal Metal Builder: Al Osra Aluminum



OFFICE BUILDING FAÇADE
Barcelona Spain

Architect Agency: Joaquim Ortega /
Massimo Preziosi
Owner: private
Technal Metal Builder: TV Montón





Business Center de Oliveira
de Azemeis, Portugal



TERTIARY OFFICES AND SHOPS

AWARD
PARTICIPANTS

p.74
p.80

AWARD TERTIARY OFFICES AND SHOPS

Business Center de Oliveira de Azemeis, Matosinhos,
Portugal

Architect Agency
Telmo Castro & Pedro Mendes Architects

Owner
Câmara municipal de Oliveira de Azeméis,
Joaquim Jorge Ferreira

Technal Metal Builder
José Carvalho, Metalcovo

The main objective of the proposal is the articulation between the architecture and the natural elements of the place such as vegetation and light. The result is materialized in the presence of a two-storey building distributed in five interconnected blocks. This levitates on a great vacuum space whose envelope stands out for the superposition and contrast between planes of great visual permeability with opaque and porous surfaces. The systems that make up the perforations of the facades confer different perspectives that superimpose the natural and constructed values of the place to the experience of the new building.

Thus, the proposed use is designed with concrete in a structure of great flexibility and versatility with multiple possibilities of organization and occupation. The access to the building is organized in two levels: the first one from the covered zone of car park, with direct entrance to an atrium that leads to the first floor; and the second one, from a bridge in reinforced concrete that is divided in two ramps.

The relationship between the interior and exterior spaces is regulated by an external skin of porous metallic mesh that provides a great transparency towards the exterior as well as protecting the interior from direct solar incidence.

SOLEAL concealed sash windows installed contribute to improving the transparency of the façade.



AWARD TERTIARY OFFICES AND SHOPS

Business Center de Oliveira de Azemeis, Matosinhos,
Portugal

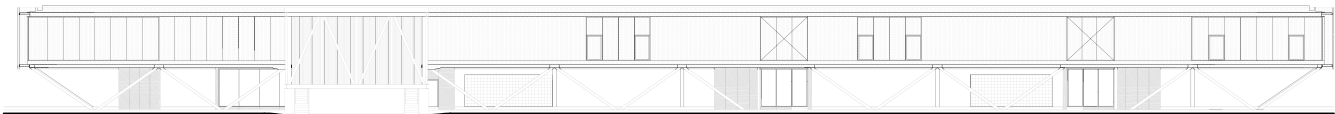


JURY COMMENTS:
"It's an innovative building, with some simple striking
forms highlighting the relationship with the land."



AWARD TERTIARY OFFICES
AND SHOPS

Business Center de Oliveira de Azemeis, Matosinhos,
Portugal



QUOTE

"Fluidity of spaces,
transparency and opacity
construct the environments
and spatiality of the building."



Pedro Mendes



Telmo Castro

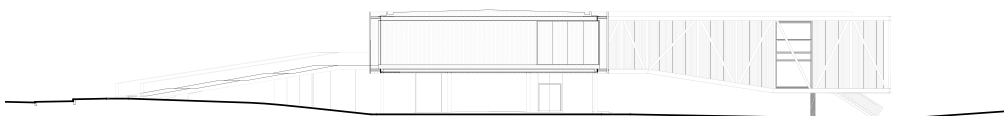
Architect Agency
Telmo Castro & Pedro Mendes
Architects

Owner
Câmara municipal de Oliveira de
Azeméis, Joaquim Jorge Ferreira

Technal Metal Builder
José Carvalho, Metalcovo

Technal Solutions used
GEODE curtain wall and SOLEAL
windows and doors

Photographer
João Morgado



PARTICIPANTS TERTIARY OFFICES AND SHOPS

TEMPORARY RECEPTION CENTER PDL
Ponta Delgada, Portugal

Architect Agency: Boxarquitectos
associados
Owner: Caritas da Ilha de São Miguel
Technal Metal Builder: Marques Britas, S.A



MUNICIPAL WORKSHOPS AND
FUNCTIONAL HOUSING
Poigny-la-Forêt, France

Architect Agency: Boidot Robin
Architectes
Owner: Ville de Poigny-la-Forêt
Technal Metal Builder: La Rambolitaine



AL MURJAN MALL
Juffair, Bahrain

Architect Agency: Gulf House Engineering,
Ahmed Bucheery
Owner: Private
Technal Metal Builder: Mannai
Aluminium & Glass



DRAGON MALL
Muharraq, Bahrain

Architect Agency: Gulf House Engineering,
Ahmed Bucheery
Owner: Diyar Al Muhharraq
Technal Metal Builder: Mannai
Aluminium & Glass



HAIR SALON
Olot, Spain

Architect Agency: Arnau Estudi
d'arquitectura
Owner: Private
Technal Metal Builder: Plantalech SL



JAWAD SULTAN HEADQUARTERS
Muscat, Oman

Architect Agency: Hoehler & alSalmy
Owner: Private
Technal Metal Builder: Panorama
Windows. Co. Llc

MEDICAL TRAINING CENTRE & CAR
PARK BDF
Riffa, Bahrain

Architect Agency: Bahrain Engineering
Bureau & Abdulla Abdul Ghaffar
Engineering
Owner: Bahrain Defence Force, Kingdom
of Bahrain
Technal Metal Builder: Mannai
Aluminium & Glass



MEDICLINIC PARKVIEW HOSPITAL
Dubai, United Arab Emirates

Architect Agency: Stantec
Owner: M/s. Mediclinic Middle East
Technal Metal Builder: M/s. Al Fayha
Aluminium Factory Llc



BOSCH MANUFACTURING HANGAR
Bidadi, India

Architect Agency: RSP Architects
Owner: Bosch Ltd
Technal Metal Builder: Ravi Enterprises



OFFICE BUILDING
L'Isle-Jourdain, France

Architect Agency: V2S Architectes
Owner: SCI La Maison Bleue
Technal Metal Builder: Gayrel



OFFICE BUILDING SADENA
Villeurbanne, France

Architect Agency: Sud Architectes
Owner: Sogelym Dixence
Technal Metal Builder: Decotech



SALAM SQUARE & GALLERY,
Madinat Sultan Qaboos, Oman

Architect Agency: Hoehler & alSalmy
Owner: OOSC
Technal Metal Builder: Pradeep T -
Airmech Oman

PARTICIPANTS TERTIARY OFFICES AND SHOPS

SANLUCAR FRUIT
Puçol, Spain

Architect Agency: Sanahuja & Partners
Owner: Private
Technal Metal Builder: Iniciativas Aluper



THE AVENUES MALL
Manama, Bahrain

Architect Agency: MSCEB & Gensler
Owner: Bareeq Al Retaj
Technal Metal Builder: Aluminium Services



THE BLACKBURN WING, BOWCLIFFE
HALL
Leeds, UK

Architect Agency: The Harris Partnership
Owner: The Harris Partnership
Technal Metal Builder: Conlon Construction



TORRE X
Luanda, Angola

Architect Agency: ROJUAL -
Gestão de projetos
Owner: ROJUAL
Technal Metal Builder: SMA - Soluções
Metálicas De Angola



UBL REGIONAL OFFICE LAHORE
Gulberg, Pakistan

Architect Agency: Isbah Hassan &
Associates
Owner: UBL Regional Office Building
Technal Metal Builder: Alcop - Aluminium
Company Of Pakistan



WADI AL SAIL MALL
Riffa, Bahrain

Architect Agency: Bahrain Engineering
Bureau & Unanime Architectes Gulf
Owner: Private
Technal Metal Builder: Aluminium
Services W.L.L

WELL BEING RESTAURANT
Blagnac, France

Architect Agency: Calvo and Tran Van
Architectes
Owner: Airbus Opérations
Technal Metal Builder: Labastère 64





Efanor Sports Centre,
Matosinhos, Portugal



LEISURE AND SPORTS

AWARD
PARTICIPANTS

p.86
p.92

AWARD LEISURE AND SPORTS

Efanor Sports Centre, Matosinhos,
Portugal

Architect Agency
Paula Santos Arquitectura

Owner
Belmiro de Azevedo Foundation - Efanor school Trigo João

Technal Metal Builder
Metaloviana, S.A. Ricardo Rodrigues

The sports facility is built on the southeast corner of the field, with a sports hall, a 25m swimming pool and two ballet studios. The sports hall, with a white steel structure is covered with translucent polycarbonate panels. The swimming pool and the ballet studios were designed in concrete, with rough appearance. These are enclosed volumes, with a controlled sun light and a withdrawn ambience, protected from the outside. The exterior spaces are including patios, sheltered playground, gardens, and the sports field. This view was spread throughout the campus, allowing a perceptible landscape design from the building interiors.

With a complex brief, the private school for 700 students is built on a 13000 square meters site.

Facing east and west, the school building is set on a longitudinal shape with three floors. The building has a variable depth, so it could be adjusted to the irregular shaped site. This width transitions are possible through a curved facade design.

Trough the triple height entrance hall, students may access all the different school spaces:

- on the ground level; the multipurpose hall and the auditorium, easily distinguishable volumes and with distinct building materials.
- on the upper floors; the classrooms with vertical solar shading blades, providing east and west direct solar light protection.
- on the last floor; the library and study areas.



AWARD LEISURE AND SPORTS

Efanor Sports Centre, Matosinhos,
Portugal



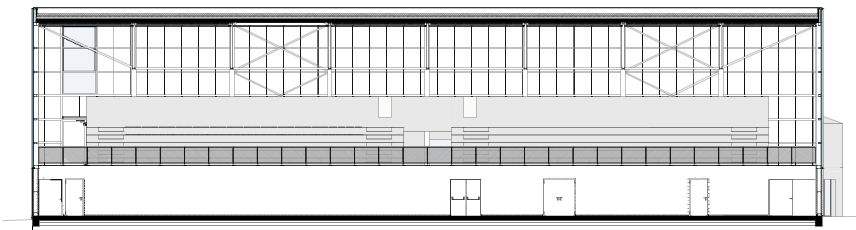
JURY COMMENTS:

"Plans are perfect as well as the form and the typology of the project. The lighting components used on the basketball court and swimming pool are subtle and the quality of surfaces speak for themselves. It has an evocative glow and the building will become timeless as it ages. This building is a framework for life."



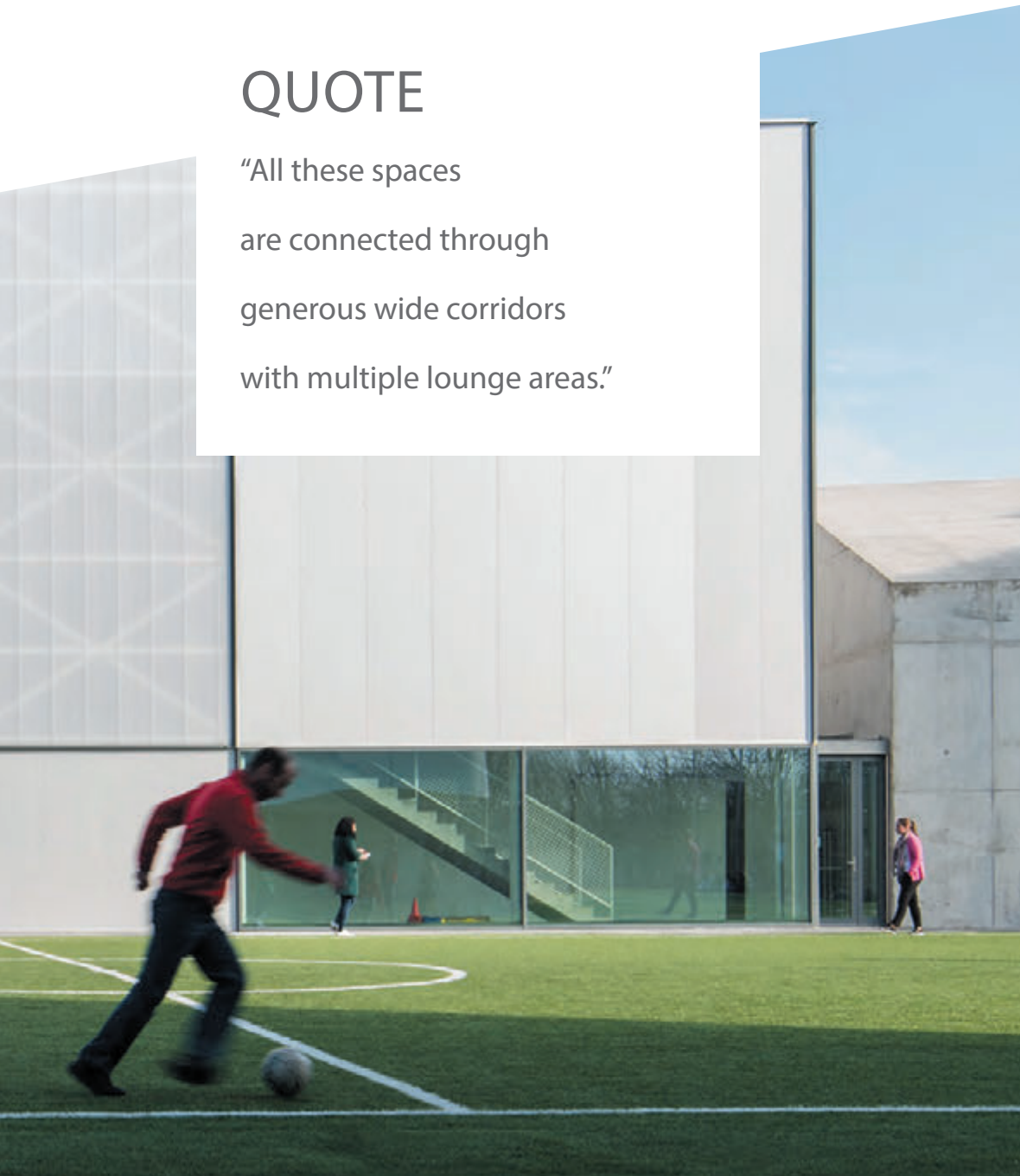
AWARD LEISURE AND SPORTS

Efanor Sports Centre, Matosinhos,
Portugal



QUOTE

"All these spaces
are connected through
generous wide corridors
with multiple lounge areas."



Paula Santos

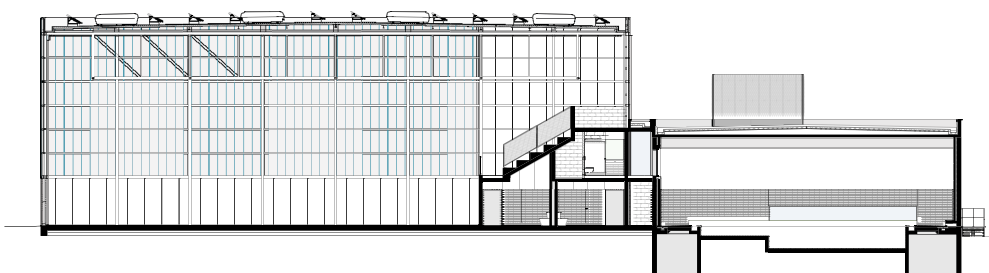
Architect Agency
Paula Santos Arquitectura

Owner
Belmiro de Azevedo Foundation -
Efanor School Trigo João

Technal Metal Builder
Metaloviana, S.A. Ricardo Rodrigues

Technal Solutions used
SOLEAL doors and windows, GEODE
curtain walls, GALENE lift and slide

Photographer
Nelson Garrido



PARTICIPANTS LEISURE AND SPORTS

GYMNASIUM

Villefranche de Lauragais, France

Architect Agency: Betillon et Freyermuth
Owner: Town hall of Villefranche-de-Lauragais
Technal Metal Builder: Labastère 31

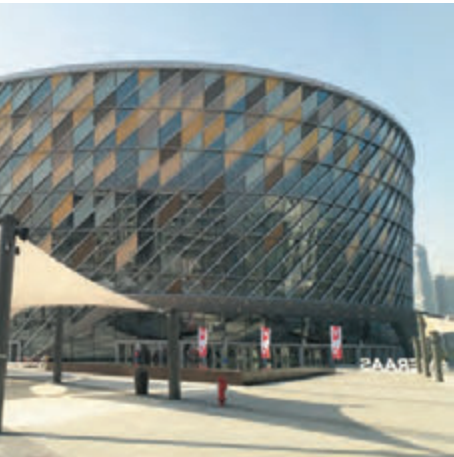


CULTURAL SPACE & SOCIAL CENTER
Nemours, France

Architect Agency: Atelier Tequi Architectes
Owner: Town hall of Nemours
Technal Metal Builder: Sud Métallerie

MULTISPORTS HALL LA CIMENTERIE

Architect Agency: BVL Architecture,
Rémy Le Gall
Owner: Community of Municipalities
of Pays de Landerneau Daoulas
Technal Metal Builder: Miroiterie Raub
Brest



DUBAI ARENA
United Arab Emirates

Architect Agency: Dar Al Handasah
Owner: M/s. Meraas Holding
Technal Metal Builder: Permasteelisa

GOLD COAST GLAMOUR

Architect Agency: BVN
Owner: City of Gold Coast
Technal Metal Builder: Safetyline Jalousie



HOLIDAY INN EXPRESS
Gibraltar

Architect Agency: GC Architects Ltd.
Owner: private
Technal Metal Builder: Serralharia o
Setenta, S.A.

BANADER HOTEL
Manama, Bahrain

Architect Agency: MSCEB & Aedas
Owner: Downtown Rotana Hotel -
Manama
Technal Metal Builder: G.P. Zachariades



COMMUNITY CENTRE OF SAVENSA
France

Architect Agency: V2S Architectes Marty
Frères Architectes
Owner: City of Sanvensa
Technal Metal Builder: Miroiterie
Villefrancoise



Wood House, Anglet,
France



UPCOMING ARCHITECTS

AWARD
PARTICIPANTS

p.96
p.102

AWARD UPCOMING ARCHITECTS

Wood House, Anglet,
France

Architect Agency
Beltza Architecture

Owner
Private

Technal Metal Builder
Labastere 64

Located in the wooded residential area of Anglet, on the Basque coast, this prefabricated house was built on a former agricultural land with a sloping ground. Its light and slender wooden structure rises on stilts in order to have a minimal impact on the environment and to orientate the different living spaces to the south.

For this 130 square metres project, completed in two months (excluding foundation blocks), the study phase was essential. Beltza Architecture worked closely with various companies for eight months to ensure that each solution delivered was ready for installation. SOLEAL windows and sliders were manufactured made to measure, in the workshop and installed by the metal builder, Labastere 64.

The house is designed to live in/out, in tune with the mild seasons of the region, and encourages a close relationship with nature. While the north façade has seven SOLEAL tilt and turn windows, the south façade is generously opened by SOLEAL sliding windows that disappear into the partitions: at an angle over 4 m wide for the living room, 4 m wide respectively for the living room and the bedroom.

These spaces overlook the surrounding canopy, extend onto wooden terraces and vanish into nets that are ideal for relaxation. They also benefit from maximum solar gains in winter, controlled in summer thanks to the thermal performance of the joinery combined with the wooden roof. Owners are lowly heating when it is cold and they ventilate naturally when the sun comes out.

The slender, grained brown TECHNAL aluminium profiles merge with the black steel posts of the corridors/terraces. A set of vertical bands, which creates a rhythm between the local larch clinkers.

The house is modular, designed as a succession of studios that can be autonomous by the individualised access in the north corridor and a pivot door system on the corridor. The interior core is made of solid wood panels retaining warm tones.



AWARD UPCOMING ARCHITECTS

Wood House, Anglet,
France



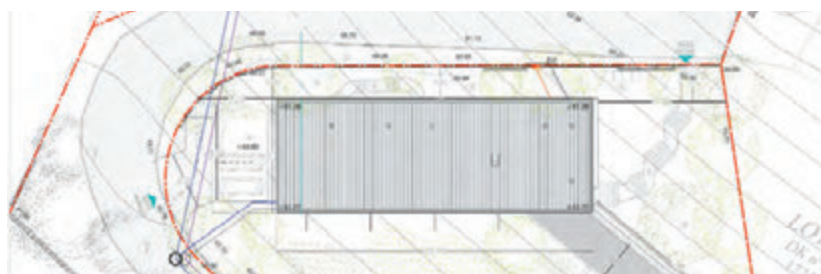
JURY COMMENTS:

"The safety has been well thought. The non balustraded balcony is very interesting. The use of timber structurally is elegant to the proportion. Very sustainable and the simplicity serves the purpose very well."



AWARD UPCOMING ARCHITECTS

Wood House, Anglet,
France

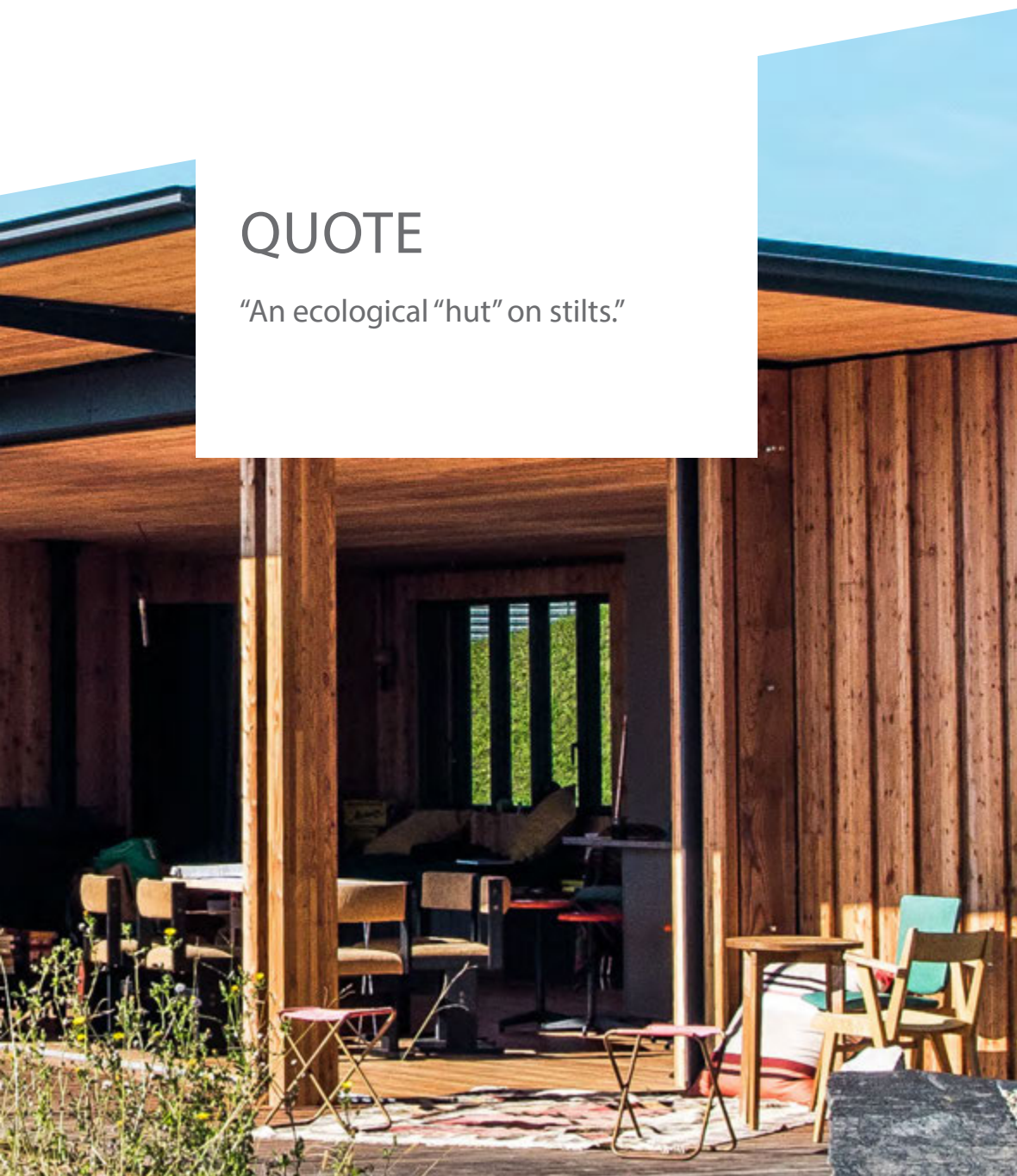


QUOTE

"An ecological "hut" on stilts."



Carole Magot



Architect Agency
Beltza Architecture

Owner
Private

Technal Metal Builder
Labastere 64

Technal Solutions used
SOLEAL windows and sliding windows

Photographer
Vincent Lantignac



PARTICIPANTS UPCOMING ARCHITECTS

UNIVERSITY CENTRE,
Cahors, France

Architect Agency: OECO Architectes
Owner: Syndicat Mixte Ouvert du Campus
Universitaire Cadurcien
Technal Metal Builder: Realco



GR HOUSE
Sever Do Vouga, Portugal

Architect Agency: Paulo Martins
Arquitectura & Design
Owner: Nik Emmanuel Amaral Fecha
Technal Metal Builder: Metalcôvo, S.A.



HOLIDAY INN EXPRESS
Gibraltar

Architect Agency: GC Architects Ltd.
Owner: private
Technal Metal Builder: Serralharia o
Setenta, S.A.



« MAISON TOI »
Villeneuve d'Ascq, France

Architect Agency: Toyos Mos Moyos
Owner: Private
Technal Metal Builder: France Verre



CROWNE PLAZA HOTEL, MUSCAT
Shatti Al Qurum, Oman

Architect Agency: Hoehler & alSalmi
Owner: Crowne Plaza Hotel, Muscat
Technal Metal Builder: Abdul Rahman





UBL Towers, Karachi,
Pakistan



SKYSCRAPERS

AWARD
PARTICIPANTS

p.106
p.112

AWARD SKYSCRAPERS

UBL Towers, Karachi,
Pakistan

Architect Agency
Shankland Cox Ltd

Owner
United Bank Limited

Technal Metal Builder
Ijlal Hasan – Alcop

Located on Chundrigar road, UBL's new head office has an impregnable view on Karachi's central financial district. From the top of its 300 feet, it is inevitably one of the most modern office building complexes in Pakistan's capital. It is also a real symbol of the bank's innovative and progressive brand attributes.

The 22-storey skyscraper features a modern design and latest facilities. The architecture includes a spacious 'Open-plan' office spaces, a two-storied auditorium, expansive meeting areas, library, display centre, advanced telecommunication systems, and a fully equipped fitness centre.

In addition to offering great spaces, the architecture has an impressive exterior façade in terms of its form and geometry.

The project did not go through any major changes in terms of forms or geometry of the building, but space planning had to go through various revisions based on recommendations of the clients and the users of the building. The Façade was completely covered with glass and fire-rated composite aluminium cladding.



AWARD SKYSCRAPERS

UBL Towers, Karachi,
Pakistan



JURY COMMENTS:

"It's a celebration of architecture in future markets such as Karachi. The building breaks the monotonous skyline of existing low-rise buildings and could encourage the promotion of a bold new skyline of the city of Karachi."



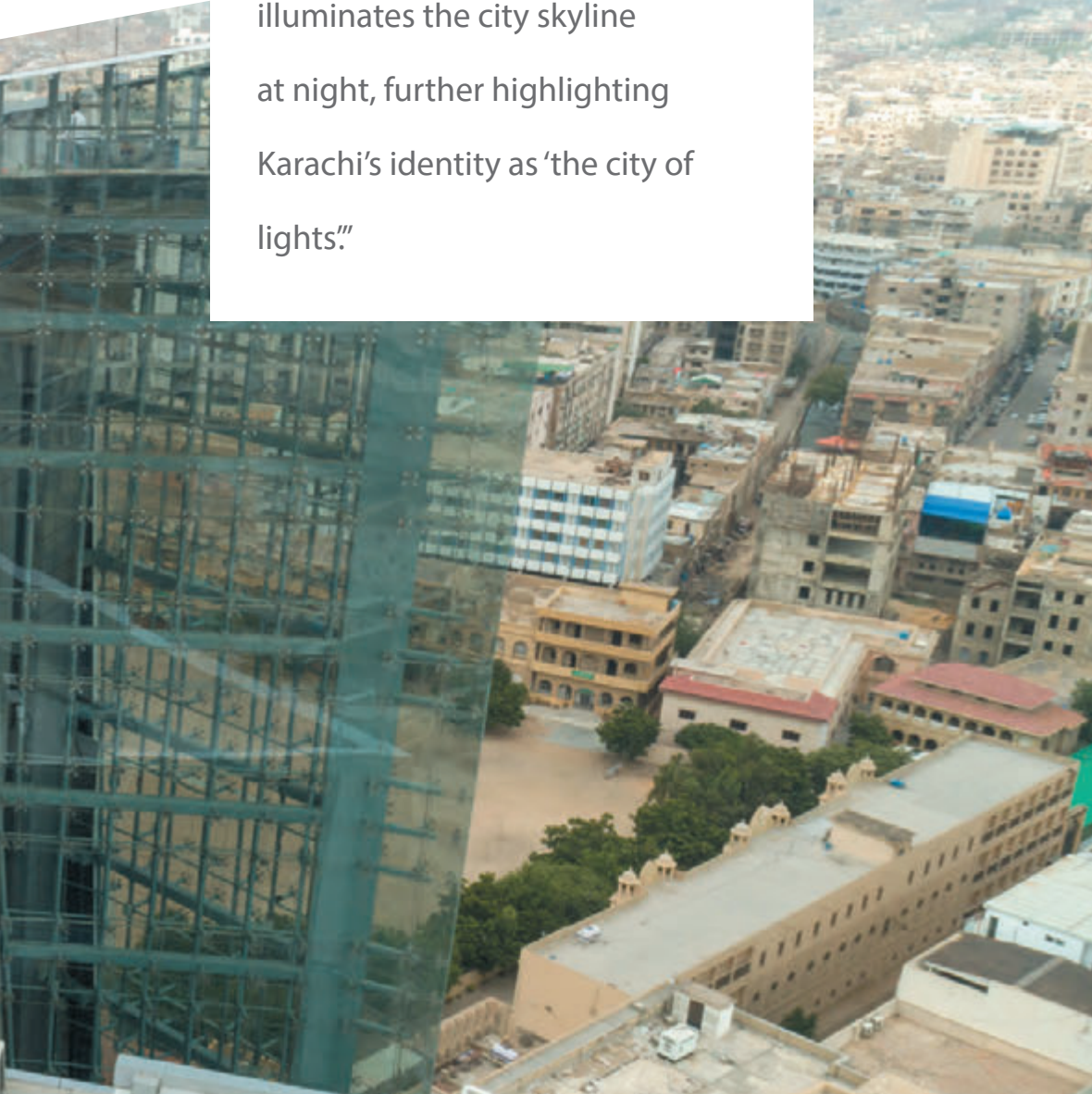
AWARD SKYSCRAPERS

UBL Towers, Karachi,
Pakistan



QUOTE

"The building's unique, advanced facade lighting illuminates the city skyline at night, further highlighting Karachi's identity as 'the city of lights'."



Philip Logan

Architect Agency
Shankland Cox Ltd

Owner
United Bank Limited

Technal Metal Builder
Alcop - Ijlal Hasan

Technal Solutions used
GEODE Curtain wall

Photographer
Faran Qureshi

PARTICIPANTS SKYSCRAPERS



BLOCK OF 95 APARTMENTS
Calpe, Spain

Architect Agency: j. Ignacio Fuster. Vam10
arquitectura y paisaje
Owner: Private
Technal Metal Builder: Construcciones
Metálicas Barceló



TORRE X
Luanda, Angola

Architect Agency: ROJUAL -
Gestão de projetos
Owner: ROJUAL
Technal Metal Builder: SMA - Soluções
Metálicas De Angola



SUPER LUXURY CONDOMINIUM
Bangkok, Thailand

Architect Agency: Palmer & Turner
(Thailand) Ltd.
Owner: Quality Houses Public Company
Limited
Technal Metal Builder: YHS International



MAGNOLIAS RATCHADAMRI
BOULEVARD
Bangkok, Thailand

Architect Agency: The Beaumont
Partnership
Owner: MQDC - Magnolia Quality
Development Corporation Limited
Technal Metal Builder: AAG Corporation
Co., Ltd.



Merchant House Boutique
Hotel Al Noor, Bahrain



TECHNAL AWARD

AWARD

p.116

TECHNAL AWARD

Merchant House Boutique Hotel Al Noor, Manama Bahrain

Architect Agency
Ahmed Bucheery

Owner
Private

Technal Metal Builder
Al Osra Aluminium, Sitra, Bahrain

The Merchant House Boutique Hotel is located in the heart of Manama city ; just a few minutes walk from the Old Manama Souk grand entrance, Bab al-Bahrain. There is an abundance of art from Bahraini artists reflective of Bahraini culture and connective with the environment to the artist's eye. Every wall we pass in The Merchant House tells us a story through a renovation process to maintain the 1974 architecture. The walls speak with feelings, colour and someone's life.

The architecture houses a sumptuous library, which is a real delight thanks to the traditional architecture of comfort, in contrast to the vibrant and luminous style of the Merchant House. There is also a garden style open-air rooftop restaurant, a world of emotion in simple true relation to nature, which makes it a world of emotion in a simple and true relationship with nature. The Hotel rooms and suites are a true natural extension of everything that was inside the Merchant's House.

As well as these riches in life-art, the architecture houses the drama of the two-storey reception lobby, the two differently styled bars, the emerald green infinity pool, and a great kitchen.



TECHNAL AWARD

Merchant House Boutique Hotel Al Noor, Manama
Bahrain



JURY COMMENTS:

"The project is a good testament to renovate the Middle East region. Investors tend to demolish projects whilst this project demonstrates a wonderful restoration of a 1974 project with a contemporary architectural upgrade. This project could spark the interest of Middle Eastern building owners to consider sustainable restorations and refurbishments in the coming years."



TECHNAL AWARD

Merchant House Boutique Hotel Al Noor, Manama
Bahrain



QUOTE

"The walls speak with
feelings, colour and
someone's life."



Ahmed Bucheery



Architect Agency
Ahmed Bucheery

Owner
Private

Technal Metal Builder
Al Osra Aluminium, Sitra, Bahrain

Technal Solutions used
SOLEAL windows, doors and sliding
systems, SAPHIR doors and GEODE
curtain walls

Photographer
Red Scarf

TECHNAL
270, rue Léon Joulin - BP 63709 - 31037 Toulouse Cedex 1 - France
www.technal.com



By  Hydro

