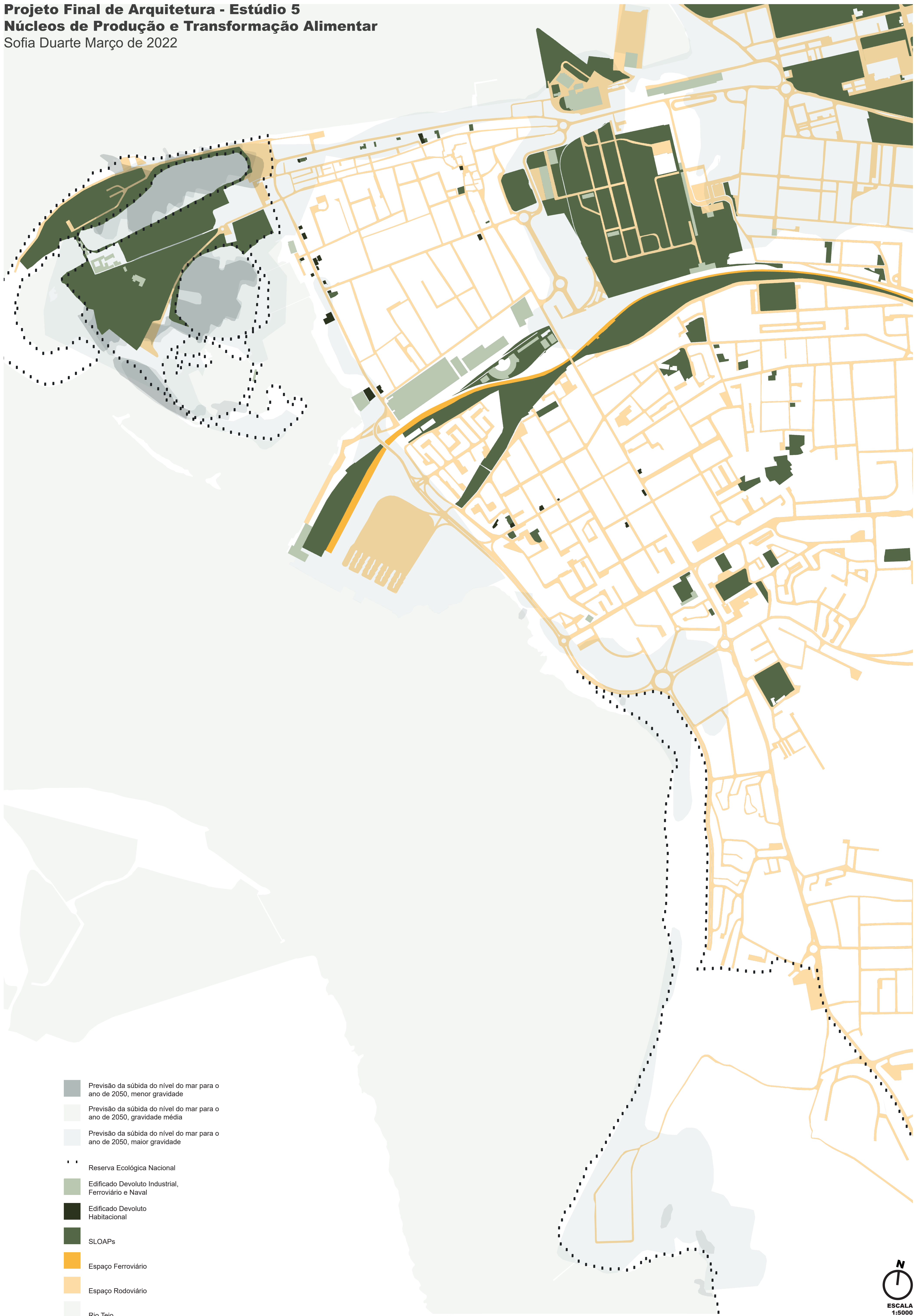


**Projeto Final de Arquitetura - Estúdio 5**  
**Núcleos de Produção e Transformação Alimentar**  
Sofia Duarte Março de 2022



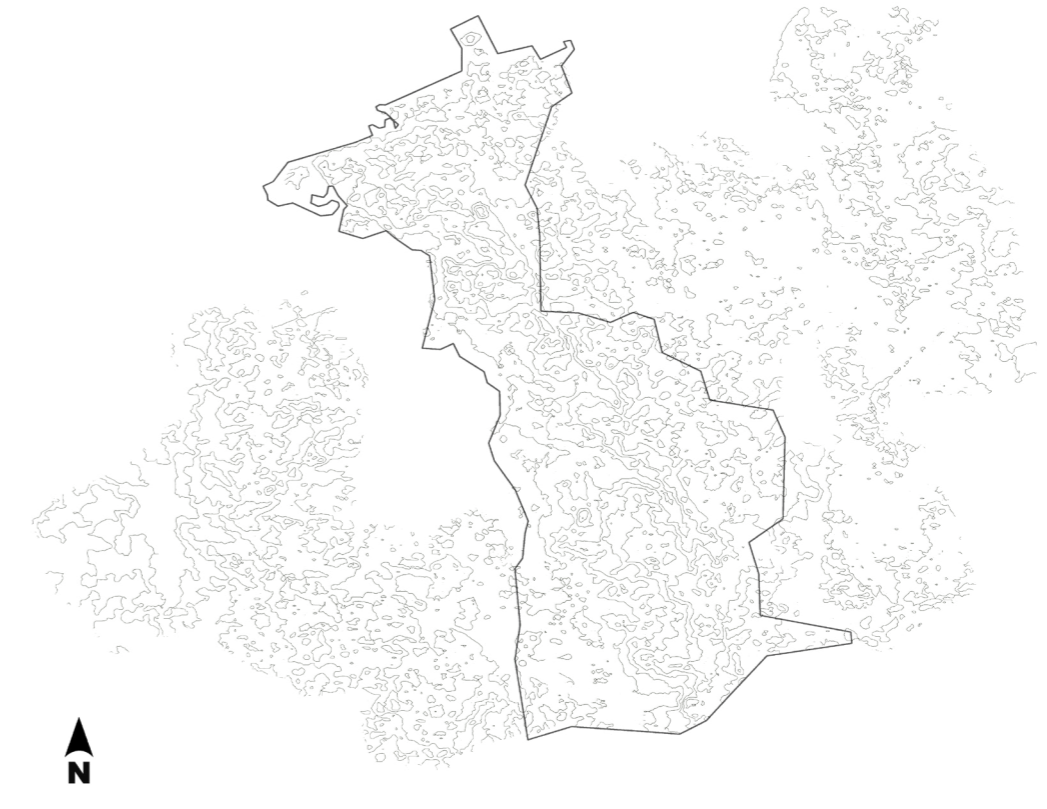


# SLOAP's

## SPACE LEFT OVER AFTER PLANNING



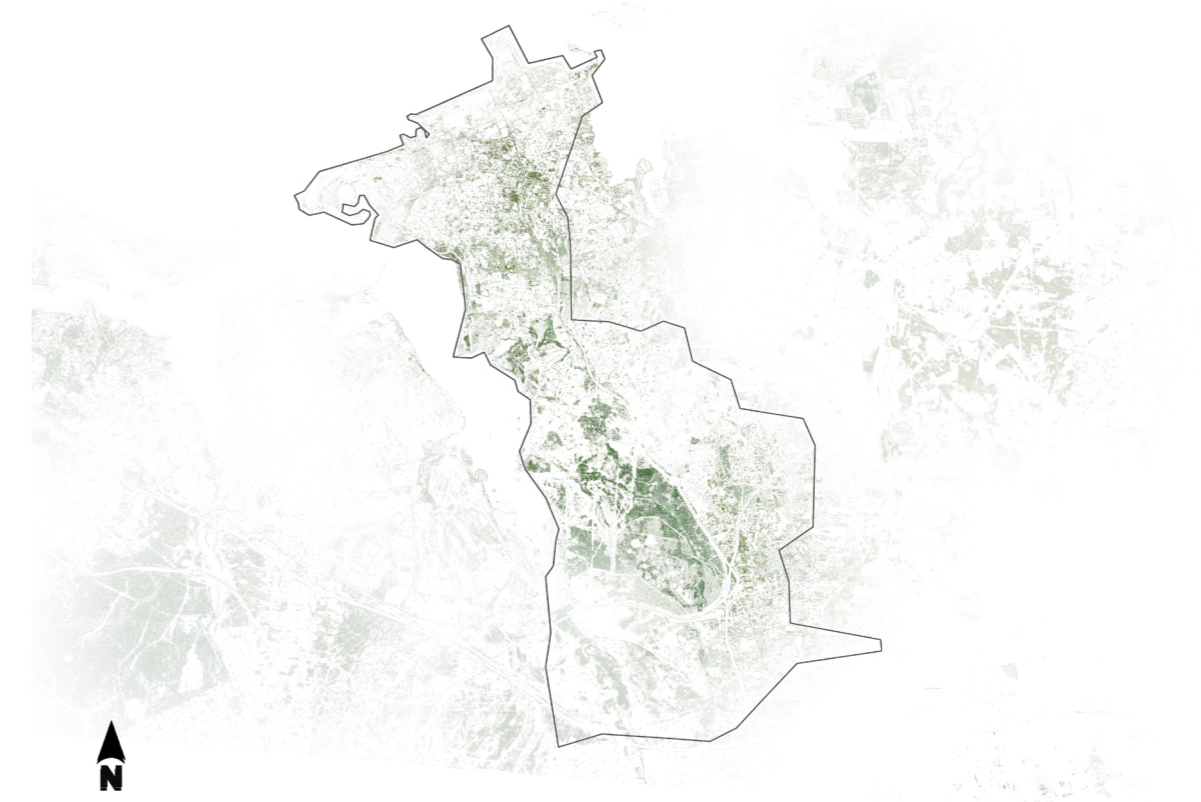
### Topografia



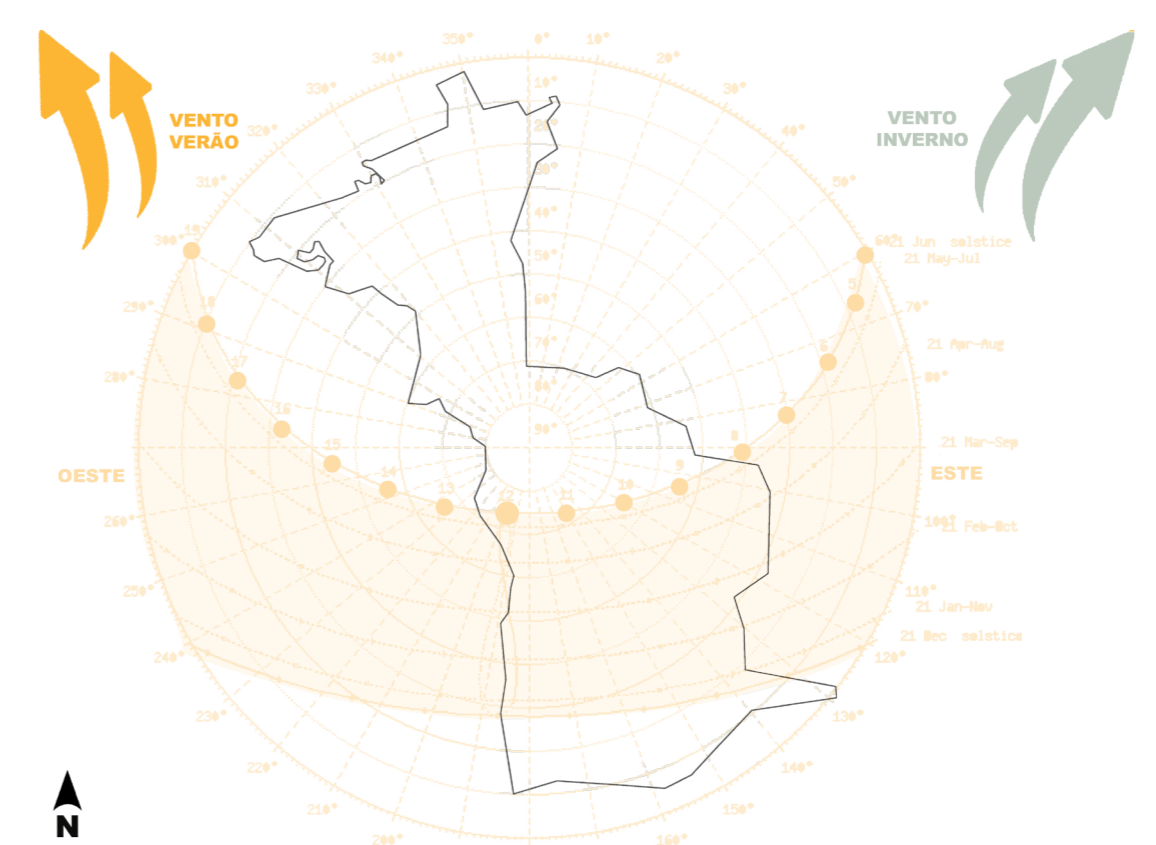
### Limite Costeiro



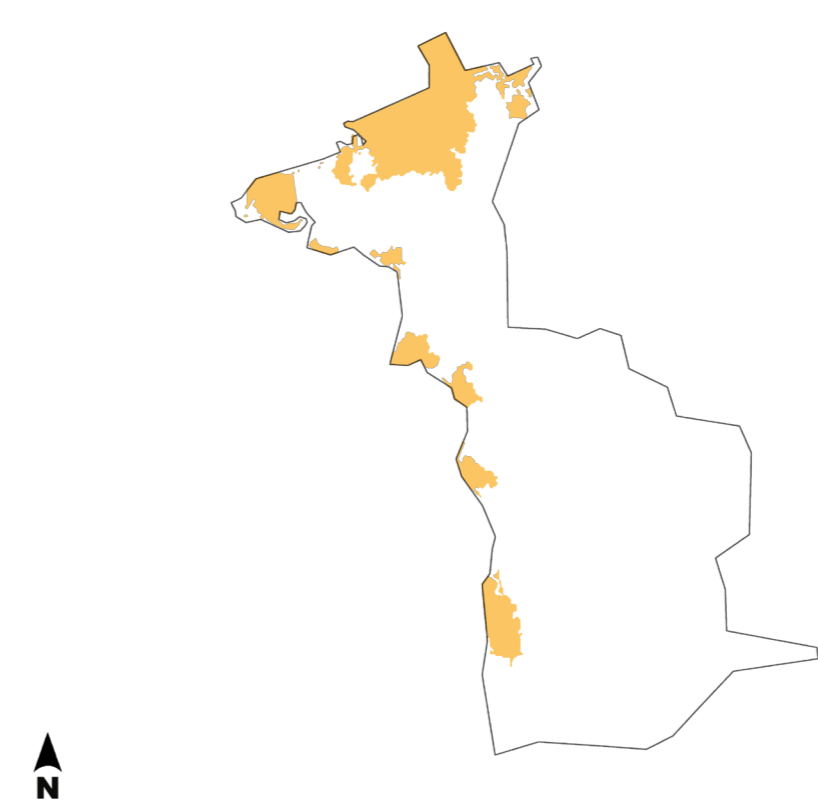
### Espaços Verdes



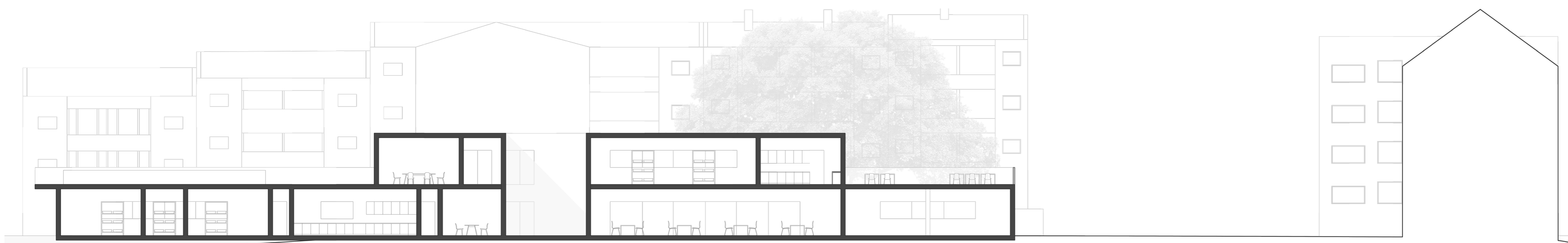
### Carta Solar e Ventos



### Zonas de Risco de Inundação



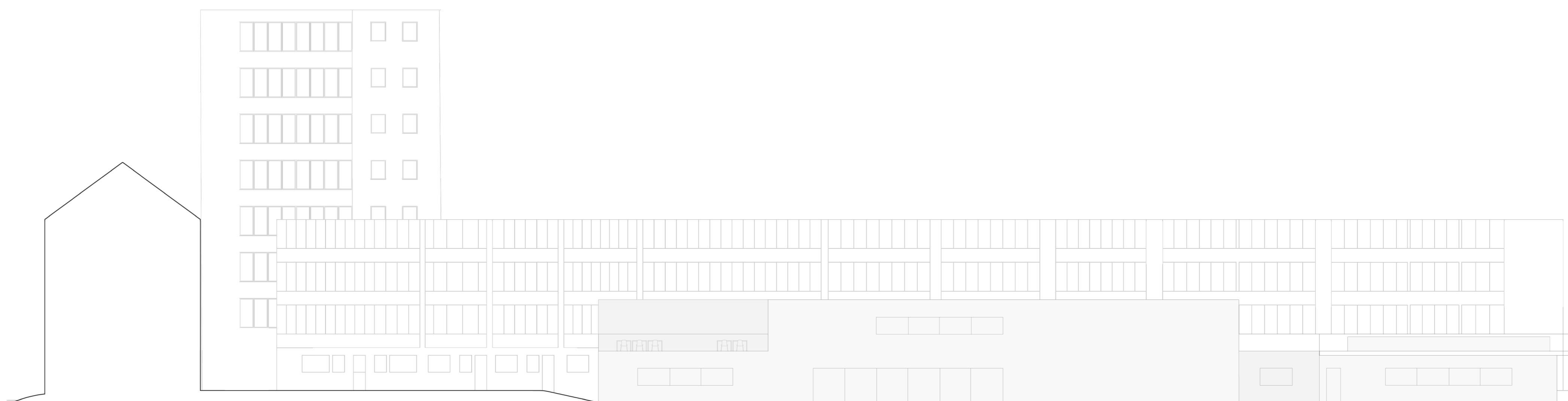
# PROPOSTA DO NÚCLEO



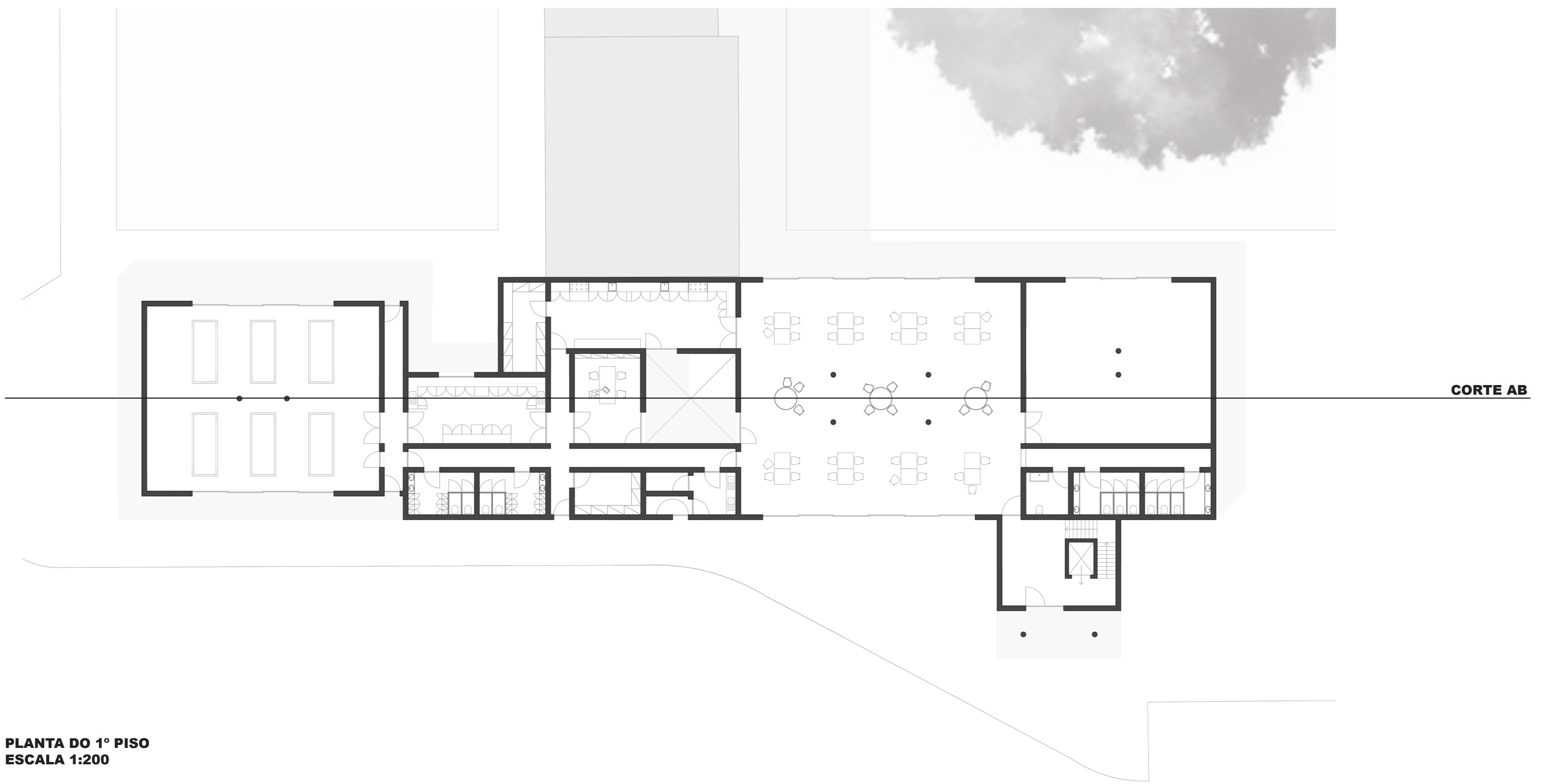
**CORTE AB**  
**ESCALA 1:200**



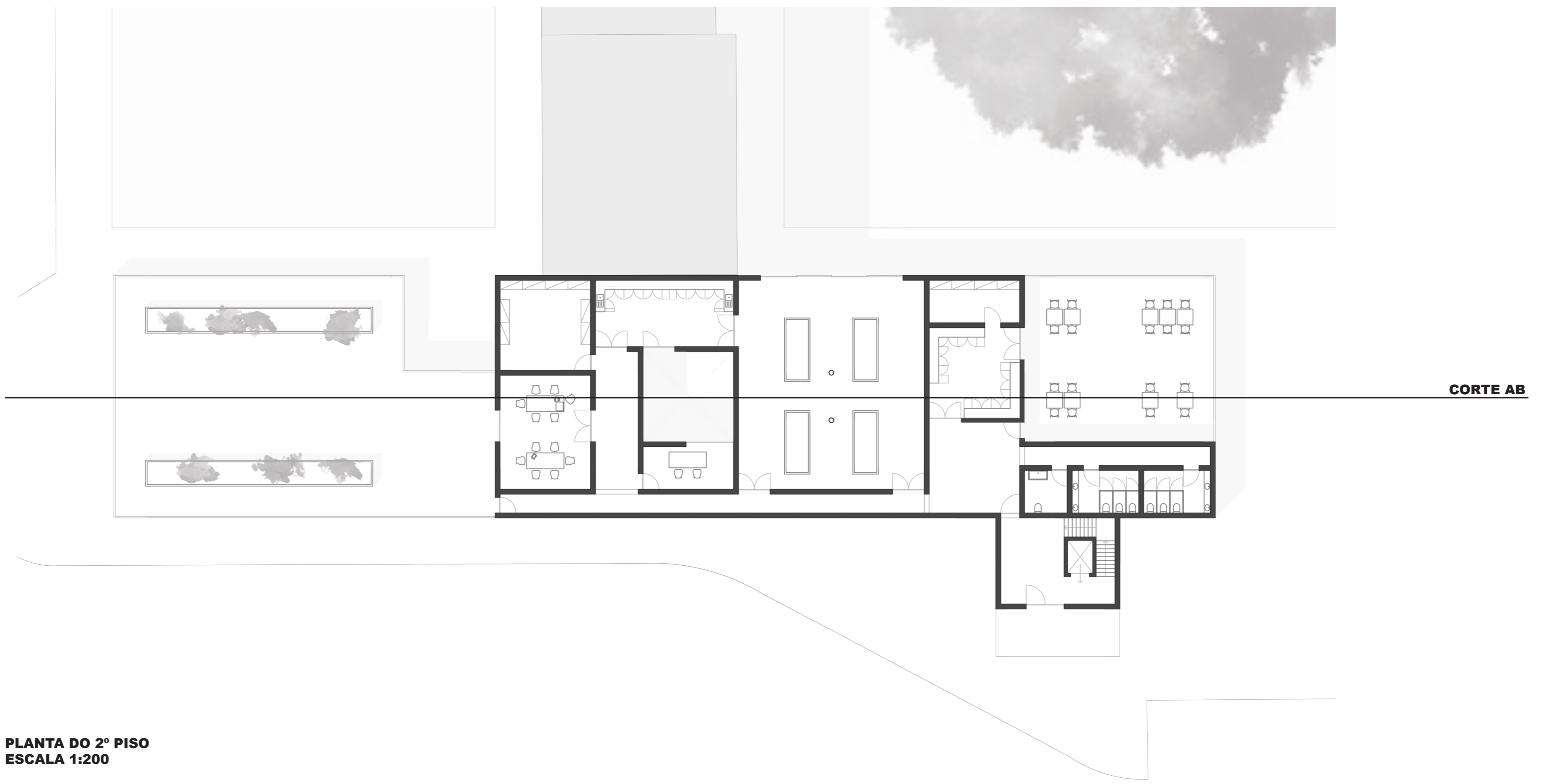
**ALÇADO SUDOESTE**  
**ESCALA 1:200**



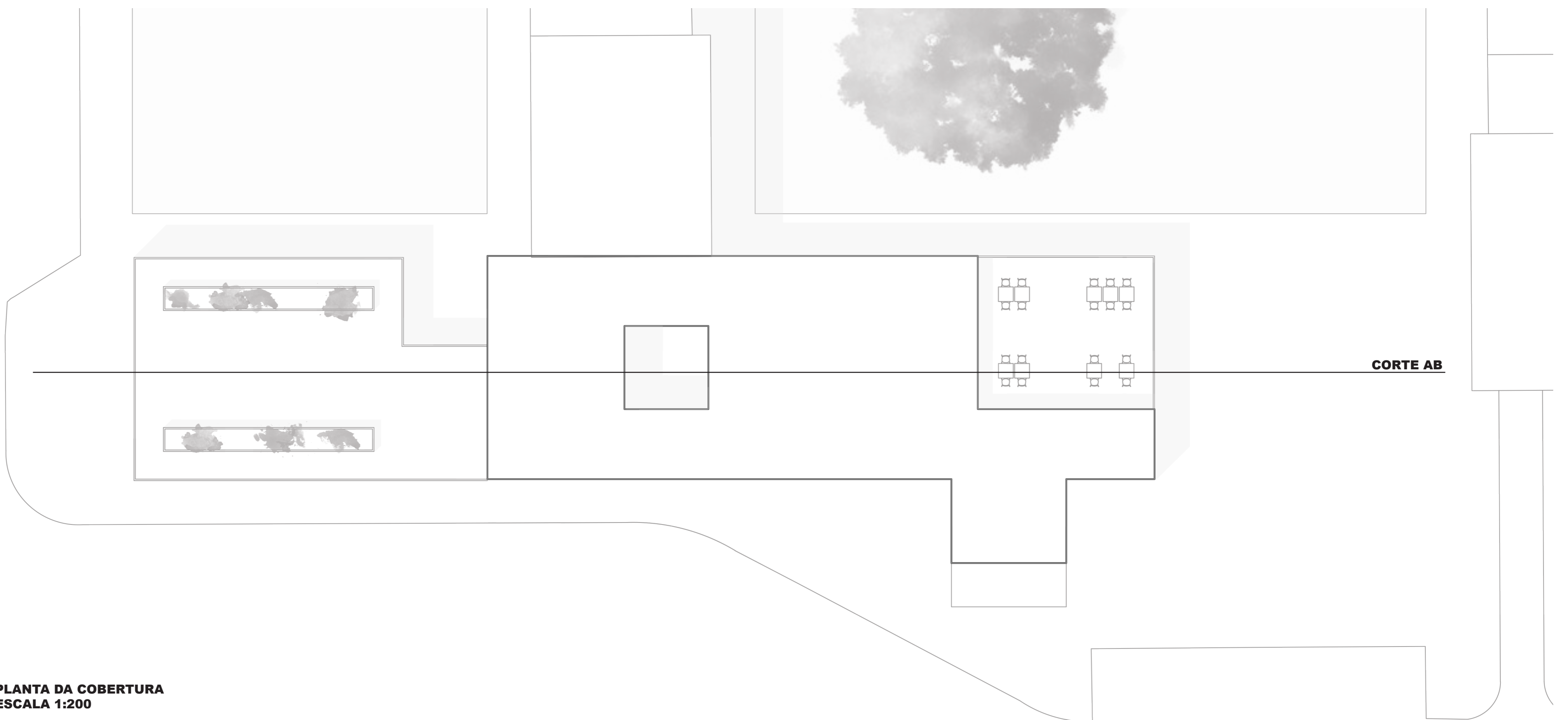
**ALÇADO NOROESTE**  
**ESCALA 1:200**



PLANTA DO 1º PISO  
ESCALA 1:200



PLANTA DO 2º PISO  
ESCALA 1:200



PLANTA DA COBERTURA  
ESCALA 1:200